



# The S-Class

Effective from December 2023 Production.

Mercedes-Benz





Book a test drive



Find your S-Class



Find a Showroom



Some of the model features, optional extras and colours shown may not be available, or may only be available in a different specification, or a different price.



Design	Technology	Plug-in Hybrid	Safety	Model lines	Model prices	Mercedes-AMG	Mercedes-AMG prices	Personalisation	Standard equipment	Genuine accessories	Technical data	Additional information
--------	------------	----------------	--------	-------------	--------------	--------------	---------------------	-----------------	--------------------	---------------------	----------------	------------------------





Book a test drive



Find your S-Class



Find a Showroom



Some of the model features, optional extras and colours shown may not be available, or may only be available in a different specification, or a different price.

Design	Technology	Plug-in Hybrid	Safety	Model lines	Model prices	Mercedes-AMG	Mercedes-AMG prices	Personalisation	Standard equipment	Genuine accessories	Technical data	Additional information
--------	------------	----------------	--------	-------------	--------------	--------------	---------------------	-----------------	--------------------	---------------------	----------------	------------------------





Book a test drive



Find your S-Class



Find a Showroom



Some of the model features, optional extras and colours shown may not be available, or may only be available in a different specification, or a different price.

Design	Technology	Plug-in Hybrid	Safety	Model lines	Model prices	Mercedes-AMG	Mercedes-AMG prices	Personalisation	Standard equipment	Genuine accessories	Technical data	Additional information
--------	------------	----------------	--------	-------------	--------------	--------------	---------------------	-----------------	--------------------	---------------------	----------------	------------------------



[Book a test drive](#)[Find your S-Class](#)[Find a Showroom](#)

Some of the model features, optional extras and colours shown may not be available, or may only be available in a different specification, or a different price.

<a href="#">Design</a>	<a href="#">Technology</a>	<a href="#">Plug-in Hybrid</a>	<a href="#">Safety</a>	<a href="#">Model lines</a>	<a href="#">Model prices</a>	<a href="#">Mercedes-AMG</a>	<a href="#">Mercedes-AMG prices</a>	<a href="#">Personalisation</a>	<a href="#">Standard equipment</a>	<a href="#">Genuine accessories</a>	<a href="#">Technical data</a>	<a href="#">Additional information</a>
------------------------	----------------------------	--------------------------------	------------------------	-----------------------------	------------------------------	------------------------------	-------------------------------------	---------------------------------	------------------------------------	-------------------------------------	--------------------------------	--





Book a test drive



Find your S-Class



Find a Showroom



S-Class

# Technology

Some of the model features, optional extras and colours shown may not be available, or may only be available in a different specification, or a different price.

Design	Technology	Plug-in Hybrid	Safety	Model lines	Model prices	Mercedes-AMG	Mercedes-AMG prices	Personalisation	Standard equipment	Genuine accessories	Technical data	Additional information
--------	------------	----------------	--------	-------------	--------------	--------------	---------------------	-----------------	--------------------	---------------------	----------------	------------------------





Book a test drive



Find your S-Class



Find a Showroom

# Mercedes-Benz User Experience Premium

Transforming the in-car user experience, thanks to MBUX: Controlled via voice or touch input, the innovative infotainment system can over time even predict personal habits thanks to artificial intelligence.



## Voice control

- Activated by the keywords “Hey Mercedes” or via touch control buttons on the steering wheel, the new intelligent voice control LINGUATRONIC<sup>1</sup> lets you control many of the infotainment functions, including destination input, phone calls or music selection. If you’re feeling chilly, just say “Hey Mercedes, I feel cold” and MBUX will adjust the temperature for you
- MBUX is able to understand different accents and will adjust to you over time

## Touch inputs

- Beside voice control you can operate MBUX via touchscreen, the optional 7-inch rear tablet, as well as touch control buttons on the steering wheel

## Personalisation

- Turn the new S-Class into your very own Mercedes-Benz, thanks to the biometric authentication with voice recognition in every seat, face recognition (with 3D driver display), finger print scanner and PIN protection
- Take your personal profiles with you between cars – vehicle settings are no longer stored locally but within the user profile, which is connected to the customer’s Mercedes me account
- Thanks to artificial intelligence, MBUX is able to learn and adapt over time. It will be able to predict your personal habits, such as navigation for frequently-driven routes, or the radio station you like to listen to on your way home from work

## Maintenance and service

- Wondering when the next service is due? Or how much further you can drive until you need to stop at a petrol station? Just ask your MBUX – it will tell you the answer

<sup>1</sup>The connection of the communication module to the mobile phone network including the emergency call system depends on the respective network coverage and availability of network providers.  
<sup>2</sup>LINGUATRONIC off-board functions are currently only available for three years

Some of the model features, optional extras and colours shown may not be available, or may only be available in a different specification, or a different price

Design	Technology	Plug-in Hybrid	Safety	Model lines	Model prices	Mercedes-AMG	Mercedes-AMG prices	Personalisation	Standard equipment	Genuine accessories	Technical data	Additional information
--------	------------	----------------	--------	-------------	--------------	--------------	---------------------	-----------------	--------------------	---------------------	----------------	------------------------





Book a test drive



Find your S-Class



Find a Showroom

# Revolutionary technology



**MBUX augmented reality head-up display** makes the front windscreen part of the digital cockpit. With the help of transparent projections onto the windscreen, the driver's field of vision is enhanced with relevant information about the current driving situation.

**12.8-inch OLED touchscreen central display** with augmented reality, fingerprint scanner, haptic feedback and integrated climate controls.



**MBUX 7-inch rear tablet** with the ability to control many on-board functions.

**12.3-inch 3D driver display** provides a clear three-dimensional representation of the driving situation and other road users, along with warning and navigation information.



Some of the model features, optional extras and colours shown may not be available, or may only be available in a different specification, or a different price.

Design	Technology	Plug-in Hybrid	Safety	Model lines	Model prices	Mercedes-AMG	Mercedes-AMG prices	Personalisation	Standard equipment	Genuine accessories	Technical data	Additional information
--------	------------	----------------	--------	-------------	--------------	--------------	---------------------	-----------------	--------------------	---------------------	----------------	------------------------

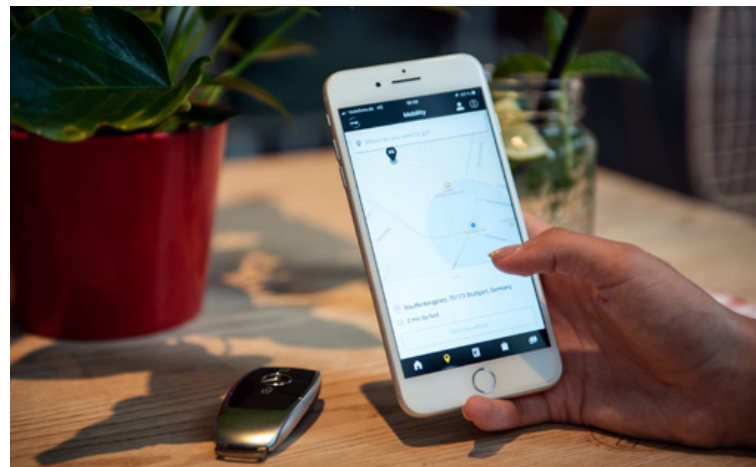
# Mercedes me connect Stay connected any time, anywhere.



Mercedes me is a range of innovative online services designed to enhance your Mercedes-Benz experience. Accessible via mobile, tablet or PC, Mercedes me lets you enjoy the highest standards of care and support, in a way that integrates seamlessly with your busy lifestyle.

### Safety and Service – Mercedes me connect helps to keep you and your car safe

Check your car's oil level, tyre pressure and fuel from your phone so you'll be ready for every journey.



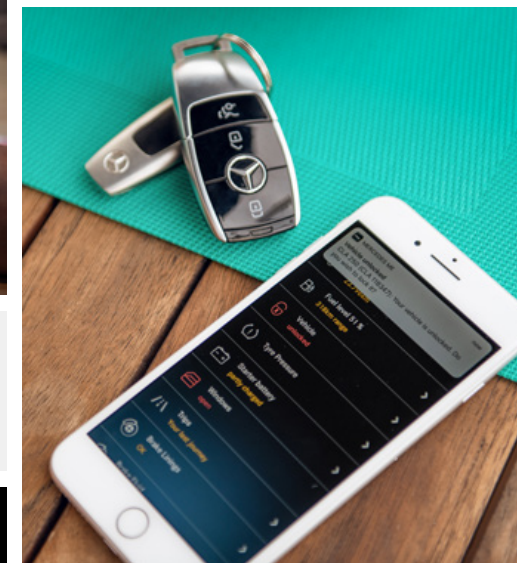
### Live Traffic Information, Parked Vehicle Locator and much more with Mercedes me connect

Forgot where you've parked? Parked Vehicle Locator<sup>1</sup> will show you exactly where your car is as long as you're in a 1-mile radius of where you parked. Real-time traffic data and dynamic route with shorter journey times.

For more information speak to your local Mercedes-Benz Agent or visit the Mercedes me connect store at [shop.mercedes-benz.com/en-gb/connect](http://shop.mercedes-benz.com/en-gb/connect)

### Comfort – connect to your car anytime, anywhere

Forgot to lock your car? With Remote Car Lock<sup>2</sup> you will receive a notification on your smartphone to let you know. With one tap, you can lock and unlock your vehicle so you never have to worry.



<sup>1</sup>The connection of the communication module to the mobile phone network including the emergency call system depends on the respective network coverage and availability of network providers

<sup>2</sup>Available on all models with the Vehicle Monitoring package. This option may vary between standard and additional cost dependent on the model

<sup>3</sup>Part of the Vehicle Status package. This option may vary between standard and additional cost dependent on the model

Images shown are for illustration purposes only

Design	Technology	Plug-in Hybrid	Safety	Model lines	Model prices	Mercedes-AMG	Mercedes-AMG prices	Personalisation	Standard equipment	Genuine accessories	Technical data	Additional information
--------	------------	----------------	--------	-------------	--------------	--------------	---------------------	-----------------	--------------------	---------------------	----------------	------------------------





Book a test drive



Find your S-Class



Find a Showroom



S-Class

# Plug-in Hybrid

Design	Technology	Plug-in Hybrid	Safety	Model lines	Model prices	Mercedes-AMG	Mercedes-AMG prices	Personalisation	Standard equipment	Genuine accessories	Technical data	Additional information
--------	------------	----------------	--------	-------------	--------------	--------------	---------------------	-----------------	--------------------	---------------------	----------------	------------------------

[Book a test drive](#)[Find your S-Class](#)[Find a Showroom](#)

# Plug-in Hybrid Electric Vehicle (PHEV) The S 580 e and Mercedes-AMG S 63 E Performance.

Plug-in hybrid vehicles enjoy the same functionality of full Hybrid technology, with the added benefit that they can be charged from an external electricity source.

## S 580 e

Petrol – 2,999 cc, 6-cylinder, 367 hp/270 kW  
Electric motor – 150 hp/110 kW

### Available as:

Long AMG Line Premium,  
Long AMG Line Premium Plus and  
Long AMG Line Premium Plus Executive

OTR from **£113,575<sup>1</sup>**

### Technical details for S 580 e

Equivalent All-Electric Range (EAER) <sup>2</sup>	67–68 miles
Charging time	
Public charging station (60 kW DC) 10–80% <sup>3</sup>	20 mins
Wallbox (11 kW AC, 3-phase) 0–100% <sup>4</sup>	2 hrs 15 mins
Domestic socket (1.8 kW)	15 hrs
Electric range consumption, combined <sup>2,5</sup>	232–236 kWh/km
Battery type (capacity)	lithium-ion (21.5 kWh)
Capacity on-board charger	11 kW AC; 60 kW DC

## Mercedes-AMG S 63 E Performance

Petrol – 3,982 cc, 8-cylinder, 612 hp/450 kW  
Electric motor – 190 hp/142 kW

### Available as:

Mercedes-AMG S 63 E Performance Touring and  
Mercedes-AMG S 63 E Performance Night Edition

OTR from **£188,810<sup>1</sup>**

### Technical details for Mercedes-AMG S 63 E Performance

Equivalent All-Electric Range (EAER) <sup>2</sup>	19 miles
Charging time	
Wallbox (3.7 kW AC, 3-phase) 25–100% <sup>6</sup>	3 hrs 15 mins
Domestic socket (1.8 kW)	7 hrs
Electric range consumption, combined <sup>2,5</sup>	332 kWh/km
Battery type (capacity)	lithium-ion (13.1 kWh)
Capacity on-board charger	3.7 kW AC

### Standard equipment

Acoustic ambient protection – the tone pitch changes depending on the driving conditions. You can therefore also differentiate whether you are braking or accelerating. Above 19 mph, the system is basically deactivated since wind and tyre noise tend to dominate at higher speeds

Charging cable – Mode 2 cable (5 metres, straight) for domestic socket

Charging cable – Mode 3 cable (8 metres, straight) for wallbox and public charging stations

Charging socket

Charging system rated at 3.7 kW AC (Mercedes-AMG S 63 E Performance only)

Charging system rated at 11 kW AC (S 580 e only)

Charging system rated at 60 kW DC (S 580 e only)

Haptic accelerator pedal with ECO Assist

Pre-entry climate control<sup>7</sup>

Radar-based recuperation

Remote and Charging Services Plus<sup>7</sup>



<sup>1</sup>The recommended on-the-road price includes the Road Fund Licence applicable to the standard model plus delivery charge (£730.00 incl. VAT), new vehicle registration fee (£55.00), fuel (£50.00 incl. VAT), and number plates (£25.00 incl. VAT). VAT is calculated at the standard rate of 20%. Some of the model features, optional extras and colours shown may not be available, or may only be available in a different specification, or at a different price. <sup>2</sup>The indicated values were determined according to the prescribed measurement method - Worldwide Harmonised Light Vehicle Test Procedure (WLTP). Figures shown may include options which are not available in the UK. For Plug-in Hybrid Electric Vehicle (PHEV) figures determined with the battery fully charged, using a combination of both battery power and fuel. These models require mains electricity for charging. <sup>3</sup>Specified voltage and current values refer to network infrastructure and can be limited by the vehicle. Times are from 10–80% charge using public rapid charging at 60 kW. <sup>4</sup>Specified voltage and current values refer to network infrastructure and can be limited by the vehicle. Times are from 0–100% charge using a wallbox (three-phase) or standard socket (single-phase). <sup>5</sup>The certified electrical consumption is generally determined at maximum AC charging capacity using a Mode 3 cable. It is therefore recommended that vehicles with a HV battery preferably be charged at a wallbox or an AC charging station with a Mode 3 cable in order to achieve shorter charging times and improved charging efficiency. <sup>6</sup>Specified voltage and current values refer to network infrastructure and can be limited by the vehicle. Times are from 25–100% charge using a wallbox (three-phase) or standard socket (single-phase). <sup>7</sup>The connection of the communication module to the mobile phone network including the emergency call system depends on the respective network coverage and availability of network providers.



# Mercedes me Charge<sup>1</sup> One registration, one contract, one billing.

Mercedes me Charge<sup>1</sup> provides access to a multitude of public charging stations located in shopping centres, hotels or at motorway services. A smartphone app as well as the vehicle's navigation system show the precise location, current availability and price at the selected charging station.

## Tens of thousands charging stations in the UK

Growing network of charging providers includes bp pulse the largest charging network in the UK. Customers also get six months free bp pulse+ membership which reduces the electricity price when charging.



## Access to fast-charging stations

Enables customers to get access to charging stations of different providers with:

- Mercedes me app
- RFID card
- Mercedes-EQ Vehicle Head unit

## Green charging

All charging using Mercedes me Charge<sup>1</sup>, will be retrospectively 'greened' by Mercedes-Benz. Please click [here](#) for more info.

## Transparent and easy billing

One invoice charging processes for payment.

## Easy access

Charging stations are displayed in Mercedes me app and in MBUX multimedia system.

## No fees

Mercedes me Charge<sup>1</sup> is standard for one year with discounted IONITY rapid-charging for one year.



<sup>1</sup>The connection of the communication module to the mobile phone network including the emergency call system depends on the respective network coverage and availability of network providers

# Mercedes me Charge<sup>1</sup> Tariffs

For more transparency and predictability, enjoy numerous features tailored to your charging habits with the new Mercedes me Charge<sup>1</sup> fixed-priced tariffs S, M and L. Owners of a new Plug-in Hybrid model will be entitled to the Mercedes me Charge<sup>1</sup> tariff M free of charge for the duration of 12 months.

## Tariff L

Recommended for 'frequent drivers'

Choose our tariff L to benefit from the best fixed prices for public charging, including discounted rapid-charging at IONITY charging stations as well as all Mercedes me Charge<sup>1</sup> features. This tariff is recommended for frequent and long-distance drivers.

Consisting of:

- All Mercedes me Charge<sup>1</sup> features
- Fixed prices per kWh (AC: £0.45/kWh; DC: £0.53/kWh)<sup>2</sup>
- IONITY rapid-charging stations discounted (£0.53/kWh)

**£10.90/month**

## Tariff M

Recommended for 'regular drivers'

Should you wish to downgrade your tariff package after 12 months but still want to benefit from fixed prices, discounted rapid-charging at IONITY charging stations and complete transparency, choose tariff M. This tariff is recommended for regular drivers.

Consisting of:

- All Mercedes me Charge<sup>1</sup> features
- Fixed prices per kWh (AC: £0.52/kWh; DC: £0.61/kWh)<sup>2</sup>
- IONITY rapid-charging stations discounted (£0.61/kWh)

**Free of charge for the duration of 12 months.**

**Thereafter:**

**£4.90/month**

## Tariff S

Recommended for 'casual drivers'

Should you wish to downgrade your tariff package after 12 months, there is the option to go for tariff S, which still offers you all the Mercedes me Charge<sup>1</sup> features based on flexible prices per kWh. This tariff is recommended for casual drivers.

Consisting of:

- All Mercedes me Charge<sup>1</sup> features
- Flexible prices per kWh

**£0/month**



<sup>1</sup>The connection of the communication module to the mobile phone network including the emergency call system depends on the respective network coverage and availability of network providers  
page: <https://eu.charge.mercedes.me/web/en/daimler-gb/tariffs>

<sup>2</sup>Tariff rate excludes the BP Pulse charging network

Price information is not guaranteed and is subject to change. Definitive price information can be found on the Digital Charging Solutions



# Next generation of home EV charging with Ohme

Mercedes-Benz plug-in vehicle customers with off-street parking can benefit from the convenience and speed of charging at home by installing an Ohme charger.

## Home charging with Ohme: from £925\* incl. VAT and standard installation

### Key benefits of Ohme:

Ohme specialise in providing future-proof electric vehicle charging solutions, in particular smart, affordable and easy-to-use charging products.

Save money: If you have a time-of-use tariff or a variable tariff, you'll pay less for your electricity at certain times of the day. Ohme uses your tariff information to charge your vehicle when the price is low to maximise your savings.

Ohme is the only EV charging provider to integrate with all energy tariffs, including Intelligent Octopus and OVO Charge Anytime – the next generation, smart EV charging tariffs.

Easy installation process.

Choice of tethered or untethered units.

Award-winning customer service – check Trustpilot for more information.

A 3-year warranty is included.

Connect your charger to the Ohme smartphone app to unlock smarter and cheaper charging at home. Easy-to-use, the Ohme app will give you full control to get more from your EV.

Ohme's chargers are compliant with the UK New Smart Charger Regulations for complete peace of mind.

### OZEV Grant:

You may be entitled to claim for an OZEV grant towards the cost of your home charger!<sup>1</sup> To find out whether you are entitled please contact your local Mercedes-Benz Agent.

### Questions?

Please contact your local Mercedes-Benz Agent to submit an enquiry to your chosen charging partner on your behalf. To find your local Mercedes-Benz Agent, please click the button at the top right hand corner.

### Warning!

If you are planning to charge your Mercedes-Benz plug-in electric vehicle using a 3-pin domestic plug socket you must get a qualified electrician to inspect and sign off the socket to confirm it is safe and suitable to charge your vehicle. Do not use an electric vehicle 3-pin charge cable with an extension cord.



\*Price excludes £350 OZEV EVHS Grant. Price correct at time of publication, subject to change

<sup>1</sup>The home charger £350 Grant (including VAT) is only available to customers who meet the criteria of the Office for Zero Emission Vehicles (OZEV). For full details and eligibility criteria for the OZEV EVHS Grant, see <https://www.gov.uk/government/publications/electric-vehicle-homecharge-scheme-guidance-for-customers-version-21>.

# Home charging with Pod Point Simple, convenient, fast charging.



Mercedes-Benz plug-in vehicle customers with off-street parking can benefit from the convenience and speed of charging at home by installing a Pod Point home charger.

## Home charging with Pod Point: from £925\* incl. VAT and standard installation

For full terms and conditions please visit <https://pod-point.com/legal/home-charger-terms-of-sale>

### Key benefits of Pod Point:

Pod Point is one of the leading provider of EV charging in the UK with over 200,000 home chargepoints installed.

A comprehensive 3 year 'swap out' warranty is included.

Auto Power Balancing lets you adjust your charge so that your electrical supply doesn't get overloaded when your home is using a lot of energy.

Built-in earthing protection removes the needs for expensive earth rods.

Choice of tethered or untethered units; £925 for a 7 kW universal, and £975 for 7 kW tethered.

The Pod Point public network consists of over 9,200 charging bays across the UK.

5 year warranty as standard, free of charge.

The standard installation package includes up to 15m of external cabling.

Utilise charge scheduling in conjunction with an off-peak EV tariff to reduce your charging costs by 70% compared with the current Energy Price Cap.<sup>1</sup>

### OZEV Grant:

You may be entitled to claim for an OZEV grant towards the cost of your home charger<sup>2</sup>

To find out whether you are entitled please contact your local Mercedes-Benz Agent.

### Questions?

Please contact your local Mercedes-Benz Agent to submit an enquiry to your chosen charging partner on your behalf. To find your local Mercedes-Benz Agent, please click the button at the top right hand corner.

### Warning!

If you are planning to charge your Mercedes-Benz plug-in electric vehicle using a 3-pin domestic plug socket you must get a qualified electrician to inspect and sign off the socket to confirm it is safe and suitable to charge your vehicle. Do not use an electric vehicle 3-pin charge cable with an extension cord.



\*Price excludes £350 OZEV EVHS Grant. Price correct at time of publication, subject to change <sup>1</sup>Based on an off-peak tariff of 8 p/kWh compared with the energy price cap as of 1 October 2023 of 26.92 p/kWh <sup>2</sup>The home charger £350 Grant (including VAT) is only available to customers who meet the criteria of the Office for Zero Emission Vehicles (OZEV). For full details and eligibility criteria for the OZEV EVHS Grant, see <https://www.gov.uk/government/publications/electric-vehicle-homecharge-scheme-guidance-for-customers-version-21>.





Book a test drive



Find your S-Class



Find a Showroom

S-Class

# Safety



Some of the model features, optional extras and colours shown may not be available, or may only be available in a different specification, or a different price.

Design	Technology	Plug-in Hybrid	Safety	Model lines	Model prices	Mercedes-AMG	Mercedes-AMG prices	Personalisation	Standard equipment	Genuine accessories	Technical data	Additional information
--------	------------	----------------	--------	-------------	--------------	--------------	---------------------	-----------------	--------------------	---------------------	----------------	------------------------



[Book a test drive](#)[Find your S-Class](#)[Find a Showroom](#)

# DIGITAL LIGHT

High-definition headlamps with innovative features

● Standard    – Not available

The new innovative DIGITAL LIGHT headlamps works like a projector with more than one million pixels per headlamp and responds with brilliant light to changing traffic, road or weather conditions. Its ULTRA RANGE Highbeam with 650 m makes you feel like driving at daylight. DIGITAL LIGHT is also able to provide assistance in the form of messages on the road in front of you.<sup>1</sup>

<sup>1</sup>This additional function depends on local road traffic laws

Model line	DIGITAL LIGHT
AMG Line Premium	–
L AMG Line Premium	–
L AMG Line Premium Plus	●
L AMG Line Premium Plus Executive	●
Mercedes-AMG S63 E Performance Touring	●
Mercedes-AMG S63 E Performance Night Edition	●







Book a test drive



Find your S-Class



Find a Showroom

# Driving Assistance package<sup>1</sup> Cares for what matters.

The new S-Class comes with standard ground-breaking innovations in safety, comfort and driving functions, to help you stay safe on the road.

**Standard on all S-Class and Mercedes-AMG S-Class model lines.**



**Active Blind Spot Assist** expanded with blind spot monitoring towards the front and side. Additional hazard indication of the blind spot warning system as well as the exit warning function via the ambient lighting

**Active Braking Assist with cross-traffic function** now with turning manoeuvre function (responding to (among other things) crossing pedestrians when making a turn). Operating range on urban routes expanded to 74 mph (previously 44 mph)

**Active Distance Assist DISTRONIC** now responds to stationary road users to prevent collisions up to 80 mph (previously 37 mph)

**Active Emergency Stop Assist:** now able to assist in manual mode (previously on in DISTRONIC mode). Optional lane change by one lane (at 49 mph where no obstacles detected)

**Active Evasive Steering Assist:** now responds to cyclists and ends of tailbacks in addition to pedestrians. Operating range on urban routes expanded to 67 mph (previously 44 mph)

**Active Lane Change Assist** aids the driver with changing lanes by means of steering torque as soon as the driver initiates the change by activating the direction indicator

**Active Lane Keeping Assist** with enhanced comfort thanks to active steering intervention (instead of braking intervention). Additionally hazard indication via the ambient lighting

**Active Speed Limit Assist** ensures detected speed limits are automatically adopted as the set speed for Active Distance Assist DISTRONIC

Increased availability and cornering performance on carriageways with **Active Steering Assist**, more stern warnings to put hands on the steering wheel with new capacitive steering wheel

**PRE-SAFE® PLUS and Impulse Side:** when a rear-end collision threatens, PRE-SAFE® PLUS can initiate preventive measures, including warning following traffic and locking the brakes on standstill

**Route-based speed adjustment with end of traffic jam function and Active Stop-and-go function** adaption of speed before curves, roundabouts and junctions with end of traffic jam function

**Traffic Sign Assist** now warns of inadvertently running a stop sign or red light

Type-specific rendering of detected road users across several lanes on the driver display

<sup>1</sup>Our driver assistance and safety systems are aids and do not relieve you of your responsibility as the driver. Please take note of the information in the Owner's Manual and the system limits which are described therein

Design	Technology	Plug-in Hybrid	Safety	Model lines	Model prices	Mercedes-AMG	Mercedes-AMG prices	Personalisation	Standard equipment	Genuine accessories	Technical data	Additional information
--------	------------	----------------	--------	-------------	--------------	--------------	---------------------	-----------------	--------------------	---------------------	----------------	------------------------



Book a test drive



Find your S-Class



Find a Showroom

# S-Class Model lines overview

## AMG Line Premium (short and long wheelbase) »



## Long AMG Line Premium Plus »



## Long AMG Line Premium Plus Executive »

Design	Technology	Plug-in Hybrid	Safety	Model lines	Model prices	Mercedes-AMG	Mercedes-AMG prices	Personalisation	Standard equipment	Genuine accessories	Technical data	Additional information
--------	------------	----------------	--------	-------------	--------------	--------------	---------------------	-----------------	--------------------	---------------------	----------------	------------------------



# S-Class AMG Line Premium (short and long wheelbase) Standard equipment highlights



Panoramic sliding sunroof



**AMG Line Premium (short wheelbase) OTR from £93,920<sup>1</sup>**  
**AMG Line Premium (long wheelbase) OTR from £97,980<sup>1</sup>**

<sup>1</sup>The recommended on-the-road price includes the Road Fund Licence applicable to the standard model plus delivery charge (£730.00 incl. VAT), new vehicle registration fee (£55.00), fuel (£50.00 incl. VAT), and number plates (£25.00 incl. VAT). VAT is calculated at the standard rate of 20%. Some of the model features, optional extras and colours shown may not be available, or may only be available in a different specification, or at a different price

## Exterior

- 20" AMG alloy wheels – multi-spoke design, painted himalaya grey with a high-shine finish (code RVQ)
- AMG bodystyling with chrome elements
- AIRMATIC air suspension with automatic level control
- KEYLESS-GO with seamless door handles
- MUTLIBEAM Intelligent Light System
- Panoramic sliding sunroof
- Power closing doors and boot lid
- Privacy glass
- Radiator grille with chrome surround and three horizontal cross struts
- Summer tyres
- Visible tailpipe trim in chrome



MUTLIBEAM Intelligent Light System



Memory package for front seats



Burmester® 3D surround sound system



### Interior

Active ambient lighting

Climatised rear seats – seat climate control for the two outer rear seats, 3-stage seat ventilation with fans in seat cushion and seat backrest, 3-stage Seat Heating Plus for driver and front passenger (long wheelbase only)

Electric rear seats with Memory package and luxury head restraints (long wheelbase only)

Heated front and rear seats

Illuminated door sills with ‘Mercedes-Benz’ lettering

Memory package for front seats

Multifunction sports steering wheel in nappa leather

THERMOTRONIC 4-zone automatic climate control with ENERGIZING AIR CONTROL

### Communications, Safety and Assistance Systems

5G communications module<sup>1</sup>

12.3-inch 3D driver display

Burmester® 3D surround sound system with 15 speakers and 710 watts output

Driving Assistance package<sup>2</sup>

Parking package with 360° camera and remote parking<sup>3</sup>

Pre-installation for Car Sharing<sup>4</sup>

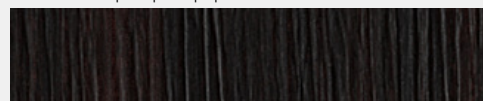
Sound personalisation

USB package plus including 8 USB-C connections

Wireless smartphone integration<sup>4</sup> and wireless charging<sup>4</sup> for mobile devices in the front

### Trim and Upholstery

Anthracite open-pore poplar wood



Nappa leather – macchiato beige/magma grey



<sup>1</sup>The connection of the communication module to the mobile phone network including the emergency call system depends on the respective network coverage and availability of network providers which are described therein <sup>2</sup>Additional subscription may be required <sup>3</sup>Compatible mobile phone required

<sup>4</sup>Our driver assistance and safety systems are aids and do not relieve you of your responsibility as the driver. Please take note of the information in the Owner's Manual and the system limits

Design	Technology	Plug-in Hybrid	Safety	Model lines	Model prices	Mercedes-AMG	Mercedes-AMG prices	Personalisation	Standard equipment	Genuine accessories	Technical data	Additional information
--------	------------	----------------	--------	-------------	--------------	--------------	---------------------	-----------------	--------------------	---------------------	----------------	------------------------



# S-Class Long AMG Line Premium Plus Standard equipment highlights



**Long AMG Line Premium Plus OTR from £105,170<sup>1</sup>**  
**Upgrade price from Long AMG Line Premium £7,190**

<sup>1</sup>The recommended on-the-road price includes the Road Fund Licence applicable to the standard model plus delivery charge (£730.00 incl. VAT), new vehicle registration fee (£55.00), fuel (£50.00 incl. VAT), and number plates (£25.00 incl. VAT). VAT is calculated at the standard rate of 20%. Some of the model features, optional extras and colours shown may not be available, or may only be available in a different specification, or at a different price



In addition to/replacement of Long AMG Line Premium:

**Exterior**

20" AMG alloy wheels – multi-spoke design, painted himalaya grey with a high-sheen finish (code RVQ; S 580 e only)

21" AMG alloy wheels – multi-spoke design, painted himalaya grey with a high-sheen finish (code RWK; excluding S 580 e)

DIGITAL LIGHT with ULTRA RANGE highbeam and projection

Heated windscreen

Summer tyres



Design	Technology	Plug-in Hybrid	Safety	Model lines	Model prices	Mercedes-AMG	Mercedes-AMG prices	Personalisation	Standard equipment	Genuine accessories	Technical data	Additional information
--------	------------	----------------	--------	-------------	--------------	--------------	---------------------	-----------------	--------------------	---------------------	----------------	------------------------



**Interior**

Active multicontour front seats with inflatable air chambers and massage function

Climatised front seats with 3 stages and Seat Heating Plus

Heated armrest in the front and rear doors and centre console

Heated steering wheel

Luxury head restraints with additional cushion for driver and front passenger

MBUX augmented reality head-up display with display measuring 1,750×873 mm

**Communications and In-Car Entertainment**

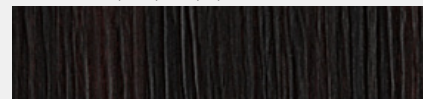
MBUX Interior Assist (front)



MBUX Interior Assist (front)

**Trim and Upholstery**

Anthracite open-pore poplar wood



Nappa leather – macchiato beige/magma grey





# S-Class Long AMG Line Premium Plus Executive Standard equipment highlights



Option shown: MANUFAKTUR diamond white metallic (code 799U)  
Wheels shown not available for S 580 e.

**Long AMG Line Premium Plus Executive OTR from £109,730<sup>1</sup>**  
**Upgrade price from Long AMG Line Premium Plus £4,560**

<sup>1</sup>The recommended on-the-road price includes the Road Fund Licence applicable to the standard model plus delivery charge (£730.00 incl. VAT), new vehicle registration fee (£55.00), fuel (£50.00 incl. VAT), and number plates (£25.00 incl. VAT). VAT is calculated at the standard rate of 20%. Some of the model features, optional extras and colours shown may not be available, or may only be available in a different specification, or at a different price



Option shown: MANUFAKTUR diamond white metallic (code 799U)  
Wheels shown not available for S 580 e.

In addition to/replacement of Long AMG Line Premium Plus:

**Exterior**

20" AMG alloy wheels – multi-spoke design, painted himalaya grey with a high-sheen finish (code RVQ; S 580 e only)

21" AMG alloy wheels – multi-spoke design, painted himalaya grey with a high-sheen finish (code RWK; excluding S 580 e)

Summer tyres



20" AMG alloy wheels (code RVQ, S 580 e only)



21" AMG alloy wheels (code RWK)

Design	Technology	Plug-in Hybrid	Safety	Model lines	Model prices	Mercedes-AMG	Mercedes-AMG prices	Personalisation	Standard equipment	Genuine accessories	Technical data	Additional information
--------	------------	----------------	--------	-------------	--------------	--------------	---------------------	-----------------	--------------------	---------------------	----------------	------------------------



MBUX rear tablet with 7-inch touchscreen

### Interior

Adaptive rear lighting

Belt feeder in rear

Chauffeur package with foldable/removable head restraint on front passenger seat

Designer belt buckles front and rear with illumination

Double sun visors with pivoting section

Electric sun blinds in rear doors, left and right

Electric sun blind in rear window

Footrest on the back of the front passenger seat electrically extendable

Front passenger seat adjustable from the rear

### Communications, Safety and Assistance Systems

Airbags – forward-facing rear airbags

Airbags – rear side airbags

MBUX Interior Assist (front and rear)

MBUX rear tablet with 7-inch touchscreen

Wireless charging<sup>1</sup> (front and rear)

<sup>1</sup>Compatible mobile phone required

### Trim and Upholstery

Anthracite open-pore poplar wood



Nappa leather – macchiato beige/magma grey





[Book a test drive](#)[Find your S-Class](#)[Find a Showroom](#)

# Model prices S-Class

Model line	Engine	Transmission	CO <sub>2</sub> WLTP <sup>1*</sup>	Basic RRP excl. VAT (£)	Total RRP incl. VAT (£)	Road Fund Licence (£) <sup>2</sup> WLTP	Rec. OTR price (£) <sup>3</sup> WLTP	P11D value (£)	BiK tax rate 2023/24 (%) <sup>2</sup>
<b>AMG Line Premium</b>									
S 350 d	Diesel – 2,989 cc, 6-cylinder, 313 hp/230 kW	9G-TRONIC 9-speed automatic	164	77,020.83	92,425.00	635.00	<b>93,920.00</b>	93,230.00	37
S 500 4MATIC	Petrol – 2,999 cc, 6-cylinder, 449 hp/330 kW	9G-TRONIC 9-speed automatic	195	85,825.00	102,990.00	1,555.00	<b>105,405.00</b>	103,795.00	37
<b>Long AMG Line Premium</b>									
S 350 d	Diesel – 2,989 cc, 6-cylinder, 313 hp/230 kW	9G-TRONIC 9-speed automatic	166	80,404.17	96,485.00	635.00	<b>97,980.00</b>	97,290.00	37
S 450 d 4MATIC	Diesel – 2,989 cc, 6-cylinder, 367 hp/270 kW	9G-TRONIC 9-speed automatic	171	84,208.33	101,050.00	1,030.00	<b>102,940.00</b>	101,855.00	37
S 500 4MATIC	Petrol – 2,999 cc, 6-cylinder, 449 hp/330 kW	9G-TRONIC 9-speed automatic	198	89,208.33	107,050.00	1,555.00	<b>109,465.00</b>	107,855.00	37
S 580 e	Petrol – 2,999 cc, 6-cylinder, 367 hp/270 kW Electric motor – 150 hp/110 kW	9G-TRONIC 9-speed automatic	15	93,929.17	112,715.00	0.00	<b>113,575.00</b>	113,520.00	8
<b>Long AMG Line Premium Plus</b>									
S 350 d	Diesel – 2,989 cc, 6-cylinder, 313 hp/230 kW	9G-TRONIC 9-speed automatic	172	86,066.67	103,280.00	1,030.00	<b>105,170.00</b>	104,085.00	37
S 450 d 4MATIC	Diesel – 2,989 cc, 6-cylinder, 367 hp/270 kW	9G-TRONIC 9-speed automatic	177	89,870.83	107,845.00	1,030.00	<b>109,735.00</b>	108,650.00	37
S 500 4MATIC	Petrol – 2,999 cc, 6-cylinder, 449 hp/330 kW	9G-TRONIC 9-speed automatic	204	94,870.83	113,845.00	1,555.00	<b>116,260.00</b>	114,650.00	37
S 580 e	Petrol – 2,999 cc, 6-cylinder, 367 hp/270 kW Electric motor – 150 hp/110 kW	9G-TRONIC 9-speed automatic	16	98,066.67	117,680.00	0.00	<b>118,540.00</b>	118,485.00	8
<b>Long AMG Line Premium Plus Executive</b>									
S 350 d	Diesel – 2,989 cc, 6-cylinder, 313 hp/230 kW	9G-TRONIC 9-speed automatic	173	89,866.67	107,840.00	1,030.00	<b>109,730.00</b>	108,645.00	37
S 450 d 4MATIC	Diesel – 2,989 cc, 6-cylinder, 367 hp/270 kW	9G-TRONIC 9-speed automatic	178	93,675.00	112,410.00	1,030.00	<b>114,300.00</b>	113,215.00	37
S 500 4MATIC	Petrol – 2,999 cc, 6-cylinder, 449 hp/330 kW	9G-TRONIC 9-speed automatic	205	98,670.83	118,405.00	1,555.00	<b>120,820.00</b>	119,210.00	37
S 580 e	Petrol – 2,999 cc, 6-cylinder, 367 hp/270 kW Electric motor – 150 hp/110 kW	9G-TRONIC 9-speed automatic	16	101,870.83	122,245.00	0.00	<b>123,105.00</b>	123,050.00	8

<sup>1</sup>The indicated values were determined according to the prescribed measurement method - Worldwide Harmonised Light Vehicle Test Procedure (WLTP). Figures shown may include options which are not available in the UK. <sup>2</sup>Figures shown are for comparability purposes; only compare with other cars tested to the same technical procedures. Figures may not reflect real life driving results, which will depend upon a number of factors including factory-fitted options, accessories fitted (post registration), variations in weather, driving styles and vehicle load. Further information about the test used to establish fuel consumption and CO<sub>2</sub> figures can be found at <http://www.mercedes-benz.co.uk/WLTP> <sup>3</sup>All engines are RDE (Real Driving Emissions) Step 2 Certified (6d-ISC-FCM). This results in a lower VED and BiK rate as these engines will not be subject to the diesel surcharge. A different first year rate of Vehicle Excise Duty (Road Fund Licence) applies for new cars. Please refer to page 62 for the relevant rate for the second and subsequent years <sup>3</sup>The recommended on-the-road price includes the Road Fund Licence applicable to the standard model plus delivery charge (£730.00 incl. VAT), new vehicle registration fee (£55.00), fuel (£50.00 incl. VAT), and number plates (£25.00 incl. VAT). VAT is calculated at the standard rate of 20%. Some of the model features, optional extras and colours shown may not be available, or may only be available in a different specification, or at a different price

Design	Technology	Plug-in Hybrid	Safety	Model lines	Model prices	Mercedes-AMG	Mercedes-AMG prices	Personalisation	Standard equipment	Genuine accessories	Technical data	Additional information
--------	------------	----------------	--------	-------------	--------------	--------------	---------------------	-----------------	--------------------	---------------------	----------------	------------------------



Book a test drive



Find your S-Class



Find a Showroom



S-Class

# Mercedes-AMG

Design	Technology	Plug-in Hybrid	Safety	Model lines	Model prices	Mercedes-AMG	Mercedes-AMG prices	Personalisation	Standard equipment	Genuine accessories	Technical data	Additional information
--------	------------	----------------	--------	-------------	--------------	--------------	---------------------	-----------------	--------------------	---------------------	----------------	------------------------





Book a test drive



Find your S-Class



Find a Showroom

# Mercedes-AMG S-Class Model lines overview



## Mercedes-AMG S 63 E Performance Touring »



## Mercedes-AMG S 63 E Performance Night Edition »



Design	Technology	Plug-in Hybrid	Safety	Model lines	Model prices	Mercedes-AMG	Mercedes-AMG prices	Personalisation	Standard equipment	Genuine accessories	Technical data	Additional information
--------	------------	----------------	--------	-------------	--------------	--------------	---------------------	-----------------	--------------------	---------------------	----------------	------------------------

# Mercedes-AMG S 63 E Performance Touring Standard equipment highlights



Option shown: MANUFAKTUR diamond white metallic (code 799U)



Option shown: MANUFAKTUR diamond white metallic (code 799U)

## Engine, Transmission and Suspension

4MATIC+

AIRMATIC air suspension

AMG ACTIVE RIDE CONTROL

DYNAMIC SELECT with a choice of driving modes

**OTR from £188,810<sup>1</sup>**

## Exterior

21" AMG forged wheels – polished multi-spoke design (code RWM)

AMG bodystyling

AMG-specific radiator grille with vertical struts in high-gloss chrome

DIGITAL LIGHT headlamps

Grey-painted brake callipers

Heat-insulating, dark-tinted noise-insulating and infrared-reflecting laminated glass

MAGIC VISION CONTROL

Panoramic sliding sunroof

Summer tyres



<sup>1</sup>The recommended on-the-road price includes the Road Fund Licence applicable to the standard model plus delivery charge (£730.00 incl. VAT), new vehicle registration fee (£55.00), fuel (£50.00 incl. VAT), and number plates (£25.00 incl. VAT). VAT is calculated at the standard rate of 20%. Some of the model features, optional extras and colours shown may not be available, or may only be available in a different specification, or at a different price

Design	Technology	Plug-in Hybrid	Safety	Model lines	Model prices	Mercedes-AMG	Mercedes-AMG prices	Personalisation	Standard equipment	Genuine accessories	Technical data	Additional information
--------	------------	----------------	--------	-------------	--------------	--------------	---------------------	-----------------	--------------------	---------------------	----------------	------------------------





**Communications, Safety and Assistance Systems**

5G communications module <sup>1</sup>	INTELLIGENT PARKING PILOT
12.3-inch 3D driver display	MBUX augmented reality for navigation
12.8-inch OLED central display	MBUX augmented reality head-up display
Burmester® high-end 3D surround sound system	MBUX navigation premium
DAB digital radio tuner	MBUX rear tablet
Dashcam	Parking package with 360° camera and remote parking functions
Driving Assistance package <sup>2</sup>	Sound personalisation
Fingerprint scanner	USB Plus package
GUARD 360° vehicle protection Plus <sup>1</sup>	



Burmester® high-end 3D surround sound system

**Interior**

Active ambient lighting with 10 colour schemes	AMG steering wheel buttons
Active Multicontour Seat package	Climatised front and rear seats
AIR-BALANCE package	Designer belt buckles front and rear
AMG illuminated door sills with 'AMG' lettering and with exchangeable cover	THERMOTRONIC 4-zone automatic climate control
AMG Performance steering wheel in nappa leather	

**Trim and Upholstery**

Anthracite open-pore poplar wood trim	AMG Exclusive nappa leather black
	

<sup>1</sup>The connection of the communication module to the mobile phone network including the emergency call system depends on the respective network coverage and availability of network providers are described therein

<sup>2</sup>Our driver assistance and safety systems are aids and do not relieve you of your responsibility as the driver. Please take note of the information in the Owner's Manual and the system limits which are described therein

Design	Technology	Plug-in Hybrid	Safety	Model lines	Model prices	Mercedes-AMG	Mercedes-AMG prices	Personalisation	Standard equipment	Genuine accessories	Technical data	Additional information
--------	------------	----------------	--------	-------------	--------------	--------------	---------------------	-----------------	--------------------	---------------------	----------------	------------------------

# Mercedes-AMG S 63 E Performance Night Edition Standard equipment highlights



Option shown: MANUFAKTUR selenite grey magno (code 297U)

OTR from **£188,810<sup>1</sup>**



Option shown: MANUFAKTUR selenite grey magno (code 297U)

In addition to/replacement of Mercedes-AMG S63 E Performance Touring:

**Exterior**

21" AMG forged wheels – cross-spoke design, painted matt black with a high-sheen rim flange (code RWD)

AMG Night package

AMG-specific radiator grille, darkened

Red-painted brake callipers

Summer tyres



<sup>1</sup>The recommended on-the-road price includes the Road Fund Licence applicable to the standard model plus delivery charge (£730.00 incl. VAT), new vehicle registration fee (£55.00), fuel (£50.00 incl. VAT), and number plates (£25.00 incl. VAT). VAT is calculated at the standard rate of 20%. Some of the model features, optional extras and colours shown may not be available, or may only be available in a different specification, or at a different price

Design	Technology	Plug-in Hybrid	Safety	Model lines	Model prices	Mercedes-AMG	Mercedes-AMG prices	Personalisation	Standard equipment	Genuine accessories	Technical data	Additional information
--------	------------	----------------	--------	-------------	--------------	--------------	---------------------	-----------------	--------------------	---------------------	----------------	------------------------



**Interior**

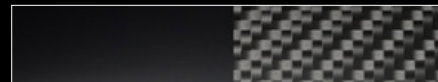
AMG Performance steering wheel in nappa leather/  
MICROCUT microfibre

Double sun visors

**Trim and Upholstery**

AMG carbon-fibre/black piano lacquer trim elements

AMG Exclusive nappa leather black





Book a test drive



Find your S-Class



Find a Showroom

# Become the AMG expert

Unleash a new level of performance.



Step into the world of performance and experience the AMG brand at Mercedes-Benz World – from the powerful sound of the engines to the smell of the leather to the unmistakable design of our vehicles.

Mercedes-Benz World invites all Mercedes-AMG customers to a complimentary adrenaline-packed driving experience. Feel the sensational AMG driving performance, develop your driving skills and even try your hand at power-sliding on the Wet Skid Circle. With expert one-to-one guidance from a Driving Specialist in the passenger seat, experience every inch of our Handling Circuits, Dynamic Straight and low friction surfaces.

[Click here for more information](#)



#### TERMS AND CONDITIONS

The following customers only are eligible: The first purchaser/registered keeper of a newly registered Mercedes-AMG. The complimentary training must be booked and taken within 12 months of email receipt. The training is available Monday - Friday only (excluding bank holidays) and subject to availability. Upgrades are available for an additional cost, details upon request. Transferable to individuals who reside at the same postal address only. Mercedes-Benz UK Limited reserves the right to amend or withdraw this training experience. Attendees must hold a full UK driving licence. Attendees will be required to sign the Mercedes-Benz World Driving Risk Acknowledgement prior to undertaking the training experience.

The training experience is also subject to the Mercedes-Benz World Terms and Conditions, as applicable. Retailer demonstrator vehicles are not eligible.

Design	Technology	Plug-in Hybrid	Safety	Model lines	Model prices	Mercedes-AMG	Mercedes-AMG prices	Personalisation	Standard equipment	Genuine accessories	Technical data	Additional information
--------	------------	----------------	--------	-------------	--------------	--------------	---------------------	-----------------	--------------------	---------------------	----------------	------------------------



[Book a test drive](#)[Find your S-Class](#)[Find a Showroom](#)

# Mercedes-AMG prices



Model line	Engine	Transmission	CO <sub>2</sub> WLTP <sup>1</sup> *	Basic RRP excl. VAT (£)	Total RRP incl. VAT (£)	Road Fund Licence (£) <sup>2</sup> WLTP	Rec. OTR price (£) <sup>3</sup> WLTP	P11D value (£)	BiK tax rate 2023/24 (%) <sup>2</sup>
<b>Mercedes-AMG</b>									
S 63 E Performance Touring	Petrol - 3,982 cc, 8-cylinder, 612 hp/ 450 kW Electric motor - 190 hp/140 kW	AMG SPEEDSHIFT MCT 9G	104	156,479.17	187,775.00	175.00	<b>188,810.00</b>	188,580.00	25
S 63 E Performance Night Edition	Petrol - 3,982 cc, 8-cylinder, 612 hp/ 450 kW Electric motor - 190 hp/140 kW	AMG SPEEDSHIFT MCT 9G	104	156,479.17	187,775.00	175.00	<b>188,810.00</b>	188,580.00	25

<sup>1</sup>The indicated values were determined according to the prescribed measurement method - Worldwide Harmonised Light Vehicle Test Procedure (WLTP). Figures shown may include options which are not available in the UK. <sup>2</sup>Figures shown are for comparability purposes; only compare with other cars tested to the same technical procedures. Figures may not reflect real life driving results, which will depend upon a number of factors including factory-fitted options, accessories fitted (post registration), variations in weather, driving styles and vehicle load. Further information about the test used to establish fuel consumption and CO<sub>2</sub> figures can be found at <http://www.mercedes-benz.co.uk/WLTP>. <sup>3</sup>A different first year rate of Vehicle Excise Duty (Road Fund Licence) applies for new cars. Please refer to page 62 for the relevant rate for the second and subsequent years. <sup>4</sup>The recommended on-the-road price includes the Road Fund Licence applicable to the standard model plus delivery charge (£730.00 incl. VAT), new vehicle registration fee (£55.00), fuel (£50.00 incl. VAT), and number plates (£25.00 incl. VAT). VAT is calculated at the standard rate of 20%. Some of the model features, optional extras and colours shown may not be available, or may only be available in a different specification, or at a different price.

Design	Technology	Plug-in Hybrid	Safety	Model lines	Model prices	Mercedes-AMG	Mercedes-AMG prices	Personalisation	Standard equipment	Genuine accessories	Technical data	Additional information
--------	------------	----------------	--------	-------------	--------------	--------------	---------------------	-----------------	--------------------	---------------------	----------------	------------------------



Book a test drive



Find your S-Class



Find a Showroom

# Upholstery

● Standard   □ No-cost option



**805A nappa leather<sup>1</sup> – macchiato beige/magma grey**

(roof liner in beige)

All AMG Line models



**801A nappa leather<sup>1</sup> – black**

(roof liner in black)

All AMG Line models



**804A nappa leather<sup>1,2</sup> – sienna brown/black**

(roof liner in black)

All AMG Line models



<sup>1</sup>100% of seat upholstery is pure leather

<sup>2</sup>Not in conjunction with MANUFATUR rubellite red metallic (code 660U)

Design	Technology	Plug-in Hybrid	Safety	Model lines	Model prices	Mercedes-AMG	Mercedes-AMG prices	Personalisation	Standard equipment	Genuine accessories	Technical data	Additional information
--------	------------	----------------	--------	-------------	--------------	--------------	---------------------	-----------------	--------------------	---------------------	----------------	------------------------



# Exclusive package

The Exclusive package gives your interior an individual look. Additional decorative elements and an ambient lighting strip on the backs of the front seat backrests increase the perceived value of the interior.

**Exclusive package** (code P34) – in conjunction with Exclusive nappa leather<sup>1</sup> interiors on Long AMG Line Premium Plus Executive.

Standard on S 63E Performance Touring and S 63E Performance Night Edition

---

Additional ambient lighting strip on the backs of the front seat backrests

---

Additional trim elements on the backs of the front seat backrests

---

Boot loading sill in stainless steel, chrome handle in the boot floor

---

Exclusive nappa leather including, instrument panel including glove box housing, centre console, front and rear door trim, rear centre armrest and grab handles

---

Exclusive trim package

---



<sup>1</sup>501a/504a/505a/507a/508a/551a/554a/555a/557a/558a

[Book a test drive](#)[Find your S-Class](#)[Find a Showroom](#)

# Exclusive package Upholstery options



501A Exclusive nappa leather<sup>1</sup> – black

Total RRP incl. VAT **£4,750.00**



504A Exclusive nappa leather<sup>1</sup> – sienna brown/black

Total RRP incl. VAT **£4,750.00**



505A Exclusive nappa leather<sup>1</sup> – macchiato beige/magma grey

Total RRP incl. VAT **£4,750.00**



507A Exclusive nappa leather<sup>1</sup> – carmine red/black

Total RRP incl. VAT **£4,750.00**



508A Exclusive nappa leather<sup>1</sup> – silver grey/black

Total RRP incl. VAT **£4,750.00**

<sup>1</sup>100% of seat upholstery is pure leather



[Book a test drive](#)[Find your S-Class](#)[Find a Showroom](#)

# Upholstery

● Standard   □ No-cost option   - Not available



**551A AMG Exclusive nappa leather<sup>1</sup> - black**

Mercedes-AMG S63 E Performance Touring	●
Mercedes-AMG S63 E Performance Night Edition	●



**554A AMG Exclusive nappa leather<sup>1</sup> - sienna brown/black**

Mercedes-AMG S63 E Performance Touring	□
Mercedes-AMG S63 E Performance Night Edition	□



**555A AMG Exclusive nappa leather<sup>1</sup> - macchiato beige/magma grey**

Mercedes-AMG S63 E Performance Touring	□
Mercedes-AMG S63 E Performance Night Edition	-

<sup>1</sup>100% of seat upholstery is pure leather

# Upholstery

● Standard   □ No-cost option



**557A AMG Exclusive nappa leather<sup>1</sup> – carmine red/black**

Mercedes-AMG S63 E Performance Touring	<input type="checkbox"/>
Mercedes-AMG S63 E Performance Night Edition	<input type="checkbox"/>



**558A AMG Exclusive nappa leather<sup>1</sup> – silver grey/black**

Mercedes-AMG S63 E Performance Touring	<input type="checkbox"/>
Mercedes-AMG S63 E Performance Night Edition	<input type="checkbox"/>

<sup>1</sup>100% of seat upholstery is pure leather



# Colour options Metallic paints

● Standard   □ No-cost option   - Not available



**197U obsidian black metallic**

AMG Line models	●
Mercedes-AMG models	●
<b>Total RRP incl. VAT</b>	-



**595U nautic blue metallic**

AMG Line models	□
Mercedes-AMG models	□
<b>Total RRP incl. VAT</b>	-



**859U mojave silver metallic**

AMG Line models	□
Mercedes-AMG models	□
<b>Total RRP incl. VAT</b>	-



**989U emerald green metallic<sup>1</sup>**

AMG Line models	□
Mercedes-AMG models	□
<b>Total RRP incl. VAT</b>	-



**346U onyx black metallic**

AMG Line models	□
Mercedes-AMG models	□
<b>Total RRP incl. VAT</b>	-



**831U graphite grey metallic**

AMG Line models	□
Mercedes-AMG models	□
<b>Total RRP incl. VAT</b>	-



**922U high-tech silver metallic**

AMG Line models	□
Mercedes-AMG models	□
<b>Total RRP incl. VAT</b>	-



**992U selenite grey metallic**

AMG Line models	□
Mercedes-AMG models	□
<b>Total RRP incl. VAT</b>	-

<sup>1</sup>Only in conjunction with 801A/804A/805A/501A/504A/505A/508A   Please note that, owing to limitations of on-screen representation, paint colours may differ from those shown

# Colour options MANUFAKTUR paints

Optional  
  No-cost option  
  Not available



**885U MANUFAKTUR opalite white bright metallic**

AMG Line models	<input type="radio"/>
Mercedes-AMG models	<input type="radio"/>
<b>Total RRP incl. VAT</b>	<b>£725.00</b>



**660U MANUFAKTUR rubellite red metallic<sup>1</sup>**

AMG Line models	<input type="radio"/>
Mercedes-AMG models	<input type="radio"/>
<b>Total RRP incl. VAT</b>	<b>£4,000.00</b>



**659U MANUFAKTUR opalite white magno<sup>1,2</sup>**

AMG Line models	<input type="radio"/>
Mercedes-AMG models	<input type="radio"/>
<b>Total RRP incl. VAT</b>	<b>£4,750.00</b>



**802U MANUFAKTUR kalahari gold metallic<sup>1</sup>**

AMG Line models	<input type="radio"/>
Mercedes-AMG models	<input type="radio"/>
<b>Total RRP incl. VAT</b>	<b>£4,000.00</b>

<sup>1</sup>Not available on AMG Line Premium S 500 4MATIC (short wheelbase)

<sup>2</sup>MANUFAKTUR magno matt paint finishes require extra care. Please refer to the Owner's Manual for instructions

Please note that, owing to limitations of on-screen representation, paint colours may differ from those shown



# Combination options

● Possible    – Not possible

		Interior upholstery colours							
		Nappa leather <sup>1</sup>			AMG Exclusive nappa leather <sup>1</sup>				
		801A black	804A sienna brown/black	805A macchiato beige/magma grey	551A black	554A sienna brown/black	555A macchiato beige/magma grey	557A carmine red/black	558A silver grey/black
Exterior paint colours	197U obsidian black metallic	●	●	●	●	●	●	●	●
	346U onyx black metallic	●	●	●	●	●	●	●	●
	595U nautic blue metallic	●	–	●	●	–	●	–	●
	831U graphite grey metallic	●	●	●	●	●	●	●	●
	859U mojave silver metallic	●	●	●	●	●	●	●	●
	922U high-tech silver metallic	●	●	●	●	●	●	●	●
	989U emerald green metallic	●	–	●	●	–	●	–	●
	992U selenite grey metallic	●	●	●	●	●	●	●	●
	885U MANUFAKTUR opalite white bright metallic	●	●	●	●	●	●	●	●
	660U MANUFAKTUR rubellite red metallic <sup>2</sup>	●	–	●	●	–	●	–	●
802U MANUFAKTUR kalahari gold metallic <sup>2</sup>	●	–	●	●	–	●	–	●	
659U MANUFAKTUR opalite white magno <sup>2</sup>	●	●	●	●	●	●	●	●	

<sup>1</sup>100% of seat upholstery is pure leather

<sup>2</sup>Not available on AMG Line Premium S500 4MATIC (short wheelbase)

[Book a test drive](#)[Find your S-Class](#)[Find a Showroom](#)

# Combination options (continued)

● Possible    – Not possible

		Interior upholstery colours				
		Exclusive nappa leather <sup>1</sup>				
		501A black	504A sienna brown/black	505A macchiato beige/magma grey	507A carmine red/black	508A silver grey/black
Exterior paint colours	197U obsidian black metallic	●	●	●	●	●
	346U onyx black metallic	●	●	●	●	●
	595U nautic blue metallic	●	–	●	–	●
	831U graphite grey metallic	●	●	●	●	●
	859U mojave silver metallic	●	●	●	●	●
	922U high-tech silver metallic	●	●	●	●	●
	989U emerald green metallic	●	●	●	–	●
	992U selenite grey metallic	●	●	●	●	●
	885U MANUFAKTUR opalite white bright metallic	●	●	●	●	●
	660U MANUFAKTUR rubellite red metallic <sup>2</sup>	●	●	●	–	●
	802U MANUFAKTUR kalahari gold metallic <sup>2</sup>	●	●	●	–	●
659U MANUFAKTUR opalite white magno <sup>2</sup>	●	●	●	●	●	

<sup>1</sup>100% of seat upholstery is pure leather

<sup>2</sup>Not available on AMG Line Premium S500 4MATIC (short wheelbase)

[Book a test drive](#)[Find your S-Class](#)[Find a Showroom](#)

# Wheels

● Standard    – Not available



**RVQ 20" AMG alloy wheels – multi-spoke design, painted himalaya grey with a high-shine finish, 255/40 R20 tyres**

AMG Line Premium	●
L AMG Line Premium	●
L AMG Line Premium Plus	–
L AMG Line Premium Plus Executive	–
L AMG Line Premium Plus/Premium Plus Executive (S580 e)	●
Mercedes-AMG models	–



**RWK 21" AMG alloy wheels – multi-spoke design, painted himalaya grey with a high-shine finish, 255/35 (front) and 285/30 (rear) R21 tyres**

AMG Line Premium	–
L AMG Line Premium	–
L AMG Line Premium Plus	●
L AMG Line Premium Plus Executive	●
L AMG Line Premium Plus/Premium Plus Executive (S580 e)	–
Mercedes-AMG models	–



# Trim

● Standard   ○ Optional   – Not available



**H02 Anthracite open-pore poplar wood trim**

AMG Line models	●
Mercedes-AMG models	–
<b>Total RRP incl. VAT</b>	–



**H38 MANUFAKTUR brown open-pore walnut wood trim with aluminium lines**

AMG Line models	○
Mercedes-AMG models	–
<b>Total RRP incl. VAT</b>	<b>£2,750.00</b>

[Book a test drive](#)[Find your S-Class](#)[Find a Showroom](#)

# Standard equipment S-Class

● Standard    – Not available

## Engine, Transmission and Suspension

	L AMG Line Premium	L AMG Line Premium Plus	L AMG Line Premium Plus Executive	AMG Line Premium
48V Mild Hybrid Technology	●	●	●	●
AdBlue® diesel emission control system (S350 d and S450 d 4MATIC only)	●	●	●	●
AIRMATIC air suspension – air suspension struts at the front and rear axle, automatic level control system, dependent on load: load detection for a constant suspension level, suspension level can be raised for rough roads and is automatically lowered at high speeds	●	●	●	●
Diesel particulate filter (S350 d and S450 d 4MATIC only)	●	●	●	●
DYNAMIC SELECT with a choice of driving modes	●	●	●	●
Petrol particulate filter (S500 4MATIC and S580 e only)	●	●	●	●
RDE2 certification	●	●	●	●

## Exterior

	L AMG Line Premium	L AMG Line Premium Plus	L AMG Line Premium Plus Executive	AMG Line Premium
Acoustic ambient protection (S580 e only)	–	●	●	●
AMG front apron in an A-wing design with large air intakes and fins in chrome plus front splitter in chrome	●	●	●	●
AMG rear apron with diffuser and trim element in chrome	●	●	●	●
Charging cable for domestic socket, 5 m, straight (S580 e only)	–	●	●	●
Charging cable for wallbox and public charging stations, 8 m, straight (S580 e only)	–	●	●	●
Charging socket (S580 e only)	–	●	●	●
Charging system – alternating current charging system – AC charging (S580 e only)	–	●	●	●
Charging system – direct current charging system – DC charging (S580 e only)	–	●	●	●
Electrically adjustable, heated and automatic dimming (exterior driver's side) mirrors with kerb/parking function	●	●	●	●
Exterior mirrors – ambient lighting with projection of brand logo	●	●	●	●

	L AMG Line Premium	L AMG Line Premium Plus	L AMG Line Premium Plus Executive	AMG Line Premium
Grey-painted brake callipers with 'Mercedes-Benz' lettering at the front, at the rear with grey logo badge	●	●	●	●
Headlamps – DIGITAL LIGHT – HD system with projection module (more than one million pixels per headlamp) and MULTIBEAM LED background module (84 high-performance LEDs per headlamp), with data from the camera, sensors and navigation system, the brightness value for each individual pixel is calculated virtually in real time, Adaptive Highbeam Assist Plus (anti-dazzle continuous main beam), ULTRA RANGE highbeam with 650 m range (legally permitted maximum headlamp range) and projection, topographical compensation, cornering light with roundabout and junction functions, active light function with anticipatory control, enhanced fog light function, city light, country road mode, motorway mode, motorway main beam and adverse weather light, Adaptive full-LED tail lights with multi-level functionality and sequential indicator lamps	–	–	●	●
Headlamps – MULTIBEAM LED – 84 individually controllable high-performance LEDs per MULTIBEAM LED module, LED dipped beam and main beam, Adaptive Highbeam Assist Plus (anti-dazzle continuous main beam), cornering light with roundabout and junction functions, active light function with anticipatory control, enhanced fog light function, city light, country road mode, motorway mode and adverse weather light, adaptive all-LED rear lamps	●	●	–	–
Heat-insulating, dark-tinted glass	●	●	●	●
Heat-insulating, dark-tinted, noise-insulating and infrared-reflecting laminated glass (S500 4MATIC and S580 e only)	●	●	●	●
Heated windscreen	–	–	●	●
KEYLESS-GO starting function	●	●	●	●
KEYLESS-GO with seamless door handles	●	●	●	●
Large compound brake discs, 390×36 mm, internally ventilated and perforated at the front	●	●	●	●
Large compound brake discs, 360×26 mm, internally ventilated and perforated at the rear	●	●	●	●

[Book a test drive](#)[Find your S-Class](#)[Find a Showroom](#)

# Standard equipment S-Class

● Standard    – Not available

## Exterior (continued)

	L AMG Line Premium	L AMG Line Premium Plus	L AMG Line Premium Plus Executive	AMG Line Premium
MAGIC VISION CONTROL	●	●	●	●
Noise reduced tyre with foam absorber – experience first-class noise comfort – in the truest sense of the word. Foam material on the inside of the tyre tread acts like a sound absorber. This makes the interior even quieter	●	●	●	●
Panoramic sliding sunroof	●	●	●	●
Power closing doors and boot lid – the assisted closing function closes doors smoothly and almost silently	●	●	●	●
Radiator grille with chrome surround and three horizontal cross struts in chrome with inserts in high-gloss black	●	●	●	●
Remote boot lid closing – open and close the boot lid from the driver's seat, while standing at the boot, or by using the vehicle key	●	●	●	●
Shoulderline trim strip in chrome-look finish	●	●	●	●
Side sill panels with chrome insert	●	●	●	●
TIREFIT	●	●	●	●
Visible tailpipe trim elements in chrome	●	●	●	●

## Wheels

20" AMG alloy wheels – multi-spoke design, painted himalaya grey with a high-sheen finish, 255/40 R20 tyres (code RVQ)	●	●	–	–
20" AMG alloy wheels – multi-spoke design, painted himalaya grey with a high-sheen finish, 255/40 R20 tyres (code RVQ); S580e only	–	●	●	●
21" AMG alloy wheels – multi-spoke design, painted himalaya grey with a high-sheen finish, 255/35 (front) and 285/30 (rear) R21 tyres (code RWK)	–	–	●	●
Summer tyres	●	●	●	●

## Interior

	L AMG Line Premium	L AMG Line Premium Plus	L AMG Line Premium Plus Executive	AMG Line Premium
12V socket in boot	●	●	●	●
12V socket in rear of centre console plus in the front passenger footwell	●	●	●	●
Active ambient lighting	●	●	●	●
Active Multicontour seats for driver and front passenger – active multicontour seats in the front with separately adjustable air chambers which can be set via the multimedia system, dynamic driving functions with automatic lateral stability depending on steering angle, lateral acceleration and speed of the vehicle, dynamically inflatable air chambers generate a massage function of varying intensity, two programmes offer an additional warming effect derived from the principle of a hot-stone massage, PRE-SAFE® function	–	–	●	●
Adaptive rear lighting	–	–	–	●
AMG floor mats	●	●	●	●
AMG pedals in brushed stainless steel with rubber studs	●	●	●	●
Automatically dimming rear view mirror	●	●	●	●
Belt feeder in rear	–	–	–	●
Chauffeur package – allows more footroom in rear behind the front passenger seat	–	–	–	●
Double sun visors	–	–	–	●
EASY ADJUST luxury head restraints with additional cushion for driver and front passenger	–	–	●	–
EASY ADJUST luxury head restraints with additional cushion for driver and front passenger, foldable and removable on front passenger side	–	–	–	●
EASY-ENTRY system	●	●	●	●
ECO start/stop function	●	●	●	●
Electric sunblinds in rear doors, left and right	–	–	–	●
Electric sunblind for rear window	–	–	–	●
Electrically adjustable rear seats including memory function	–	●	●	●



[Book a test drive](#)[Find your S-Class](#)[Find a Showroom](#)

# Standard equipment S-Class

● Standard    – Not available

## Interior (continued)

	L AMG Line Premium	L AMG Line Premium Plus	L AMG Line Premium Plus Executive	AMG Line Premium
Illuminated door sill panels with 'Mercedes-Benz' lettering	●	●	●	●
Memory package with electrically adjustable driver and front passenger seats, steering column and exterior mirrors, with 3 storable positions	●	●	●	●
Pre-entry climate control <sup>1</sup>	●	●	●	●
Rear centre armrest with double cup holder	●	●	●	●
Seats – climatized front seats: seat climate control for driver and front passenger, 3-stage seat ventilation with fans in seat cushion and seat backrest, 3-stage Seat Heating Plus for driver and front passenger	–	–	●	●
Seats – climatized rear seats: seat climate control for the two outer rear seats, 3-stage seat ventilation with fans in seat cushion and seat backrest, 3-stage Seat Heating Plus for the two outer rear seats	–	●	●	●
Seats – four-way lumbar support for driver and front passenger	●	●	●	●
Seats – heated front and rear seats	●	●	–	–
Seats – seat heating for driver and front passenger	●	●	–	–
Seats – seat heating for two outer rear seats	●	–	–	–
Seats – seat on front passenger side electrically adjustable from the rear	–	–	–	●
THERMOTRONIC four-zone automatic climate control with ENERGIZING AIR CONTROL	●	●	●	●
Through-loading feature	●	●	●	●
Two bag hooks	●	●	●	●
Warmth Comfort package – heated armrests in the front and rear doors, heated armrest in the centre console at the front	–	–	●	●

## Steering

	L AMG Line Premium	L AMG Line Premium Plus	L AMG Line Premium Plus Executive	AMG Line Premium
Direct steering	●	●	●	●
Multifunction sports steering wheel in nappa leather	●	●	●	●
Steering column gear selector	●	●	●	●
Steering wheel gearshift paddles	●	●	●	●
Steering wheel heating	–	–	●	●

## Paint, Trim and Upholstery

	L AMG Line Premium	L AMG Line Premium Plus	L AMG Line Premium Plus Executive	AMG Line Premium
Paint – metallic paint	●	●	●	●
Roof liner – fabric roof liner	●	●	●	●
Trim – anthracite open-pore poplar wood	●	●	●	●
Trim – centre console in a black crystal-look finish	●	●	●	●
Upholstery – nappa leather	●	●	●	●

## Safety and Assistance Systems

	L AMG Line Premium	L AMG Line Premium Plus	L AMG Line Premium Plus Executive	AMG Line Premium
Adaptive brake lights	●	●	●	●
Airbags – centre airbag, driver and front passenger airbags, front sidebags and windowbags	●	●	●	●
Airbags – forward-facing rear airbags	–	–	–	●
Airbags – rear side airbags	–	–	–	●
Anti-lock braking system (ABS) with Brake Assist (BAS)	●	●	●	●

<sup>1</sup>The connection of the communication module to the mobile phone network including the emergency call system depends on the respective network coverage and availability of network providers

[Book a test drive](#)[Find your S-Class](#)[Find a Showroom](#)

# Standard equipment S-Class

● Standard    – Not available

## Safety and Assistance Systems (continued)

	AMG Line Premium	L AMG Line Premium Plus	L AMG Line Premium Plus Executive	L AMG Line Premium Plus Executive
ATTENTION ASSIST	●	●	●	●
Automatic child seat recognition sensor	●	●	●	●
Brake pad wear indicator – front brakes	●	●	●	●
Crosswind Assist	●	●	●	●
Dashcam	●	●	●	●
Designer belt buckles front and rear	–	–	–	●
Driving Assistance package <sup>1</sup>	●	●	●	●
Electric parking brake	●	●	●	●
Electric Stability Program (ESP®) with Acceleration Skid Control (ASR)	●	●	●	●
First aid kit	●	●	●	●
GUARD 360° vehicle protection Plus <sup>2</sup>	●	●	●	●
Increased anti-theft protection	●	●	●	●
INTELLIGENT PARKING PILOT	●	●	●	●
Mercedes-Benz emergency call system <sup>2</sup>	●	●	●	●
Parking package with 360° camera	●	●	●	●
Pedestrian protection	●	●	●	●
PRE-SAFE® system including PRE-SAFE sound	●	●	●	●
Rear belt status indication in the instrument display	●	●	●	●
Tyre pressure loss warning system	●	●	●	●

## Communications and In-Car Entertainment

	AMG Line Premium	L AMG Line Premium Plus	L AMG Line Premium Plus Executive	L AMG Line Premium Plus Executive
3D driver display – 12.3-inch freestanding display	●	●	●	●
5G communications module <sup>2</sup>	●	●	●	●
Accident recovery and breakdown management <sup>2,3</sup> – in an emergency quickly provides a connection to the Customer Assistance Centre in order to obtain assistance, for example with recovery of the vehicle or from the breakdown service Mercedes-Benz Service24h	●	●	●	●
DAB digital radio	●	●	●	●
Fingerprint scanner – colour-illuminated fingerprint scanner in the trim strip below the OLED media display, two fingerprints per user can be stored, quick access replaces PIN entry, protects personal data such as profiles plus office and payment functions	●	●	●	●
Hard-disc navigation	●	●	●	●
Geofencing <sup>2</sup> – available to use free of charge for three years following activation <sup>3</sup> , denotes a specific area and notifies via push message when the vehicle leaves or enters this area	●	●	●	●
Maintenance management <sup>3</sup> – proactively transfers maintenance details to the preferred Mercedes-Benz service partner in order to coordinate workshop appointments	●	●	●	●
MBUX augmented reality head-up display	–	–	●	●
MBUX augmented reality for navigation	●	●	●	●
MBUX extended functions <sup>2</sup>	●	●	●	●
MBUX Interior Assist (front)	–	–	●	–
MBUX Interior Assist (front and rear)	–	–	–	●
MBUX navigation premium	●	●	●	●
MBUX rear tablet	–	–	–	●

<sup>1</sup>Our driver assistance and safety systems are aids and do not relieve you of your responsibility as the driver. Please take note of the information in the Owner's Manual and the system limits which are described therein of network providers <sup>2</sup>To use this service, you must register on the Mercedes me portal and also accept the Terms of Use for the Mercedes me connect services. In addition, the respective vehicle must be paired with the user account. Upon expiry of the initial term, the services can be extended for a fee. Initial activation of the services is possible within 1 year of first registration or commissioning by the customer, whichever occurs first

<sup>3</sup>The connection of the communication module to the mobile phone network including the emergency call system depends on the respective network coverage and availability



Book a test drive



Find your S-Class



Find a Showroom

# Standard equipment S-Class

● Standard    – Not available

## Communications and In-Car Entertainment (continued)

	AMG Line Premium	L AMG Line Premium Plus	L AMG Line Premium Plus Executive	AMG Line Premium	L AMG Line Premium Plus	L AMG Line Premium Plus Executive
OLED central display – 12.8-inch touchscreen	●	●	●	●	●	●
Parked vehicle locator <sup>1</sup> – available to use free of charge for three years following activation <sup>2</sup> , shows the position of the parked vehicle in a radius of approx. 1.5 km	●	●	●	●	●	●
Personalisation <sup>1</sup> – available to use free of charge for three years following activation <sup>2</sup> stores settings such as the radio station or navigation destination in the personal driver profile and enables these to be used in vehicles with the same telematics generation, the profile can be linked to the key, and the functions can therefore already be activated before getting in	●	●	●	●	●	●
Pre-installation for Car Sharing <sup>1</sup>	●	●	●	●	●	●
Pre-installation for Navigation Services <sup>1</sup> – display of online content on the navigation map, parking spaces, weather information, local search	●	●	●	●	●	●
Remote and Charging Services Plus <sup>1</sup> – available to use free of charge for three years following activation <sup>2</sup> (S580 e only)	–	●	●	●	●	●
Remote Door Locking and Unlocking <sup>1</sup> – available to use free of charge for three years following activation <sup>2</sup> , provides convenient remote monitoring	●	●	●	●	●	●
Remote parking package <sup>1</sup> – available to use free of charge for 3 years following activation <sup>2</sup>	●	●	●	●	●	●
Remote retrieval of vehicle status <sup>1,2</sup> – shows mileage, tyre pressure, washer fluid level, etc.	●	●	●	●	●	●
Remote vehicle diagnostics <sup>1,2</sup> – enables better support in the workshop by allowing the Mercedes-Benz service partner to query the vehicle status prior to an upcoming workshop appointment	●	●	●	●	●	●
Remote vehicle finder <sup>1</sup> – available to use free of charge for three years following activation <sup>2</sup> indicators activated via the app help to draw attention to the vehicle, for example in large, confusing car parks	●	●	●	●	●	●
Send2Car function <sup>1</sup> – available to use free of charge for three years following activation <sup>2</sup> , sends selected addresses via the app to the vehicle's navigation system, for example POIs or restaurants	●	●	●	●	●	●
Sliding sunroof/windows with remote closing and opening including ventilation <sup>1</sup> function to use free of charge for three years following activation <sup>2</sup> for a breath of fresh air in the vehicle available	●	●	●	●	●	●
Software update <sup>2</sup> – updates the software of the vehicle's systems without having to visit the workshop	●	●	●	●	●	●
Sound personalisation – a setup assistant with innovative algorithms identifies your music preferences together with you and sets the Burmester® sound system to match your requirements. It stores the result in a personal profile	●	●	●	●	●	●
Sound system – Burmester® 3D surround sound system	●	●	●	●	●	●
Speed fencing <sup>1</sup> – available to use free of charge for 3 years following activation <sup>2</sup> , also lists when and where the pre-defined speed was exceeded	●	●	●	●	●	●
Stolen Vehicle Help <sup>1</sup> (free of charge for 3 years from activation) – this service reduces the bureaucratic effort required and gives you an advantage in terms of time. In the event of theft, you can report it to the police. You can transfer the police file number (depending on country) plus the relevant vehicle and owner information quite simply via app to our certified partner's security centre. This centre will then coordinate with the local police station to track your vehicle	●	●	●	●	●	●
Telediagnosics <sup>1,2</sup> – notifies the Customer Assistance Centre or the preferred Mercedes-Benz service partner when components with diagnostics capability need replacing (e.g. brake pads) and enables contact to be made via a pop-up message in the vehicle's multimedia system	●	●	●	●	●	●
USB Plus package – four additional USB-C connections, two at the front and in the rear	●	●	●	●	●	●
Valet protect <sup>1</sup> – available to use free of charge for 3 years following activation <sup>2</sup> notifies via the app when the ignition is switched on/off and when the vehicle moves outside a defined radius (1km, 2.5 km or 5 km)	●	●	●	●	●	●
Wireless charging system for mobile devices in the front <sup>3</sup>	●	●	●	●	●	●
Wireless charging system for mobile devices in the rear <sup>3</sup>	–	–	–	●	●	●
Wireless smartphone integration <sup>3</sup>	●	●	●	●	●	●

<sup>1</sup>The connection of the communication module to the mobile phone network including the emergency call system depends on the respective network coverage and availability of network providers

<sup>2</sup>To use this service, you must register on the Mercedes me portal and also accept the Terms of Use for the Mercedes me connect services. In addition, the respective vehicle must be paired with the user account. Upon expiry of the initial term, the services can be extended for a fee. Initial activation of the services is possible within 1 year of first registration or commissioning by the customer, whichever occurs first

<sup>3</sup>Compatible smartphone required. For further details please visit <https://www.mercedes-benz-mobile.com/>



[Book a test drive](#)[Find your S-Class](#)[Find a Showroom](#)

# Standard equipment Mercedes-AMG

● Standard    – Not available

## Engine, Transmission and Suspension

	Performance Night Edition	Performance Touring
4MATIC+	●	●
AMG RIDE CONTROL suspension	●	●
AMG SPEEDSHIFT MCT 9G	●	●
DYNAMIC SELECT with a choice of driving modes	●	●
ECO start/stop function	●	●
EU6 emissions standard	●	●
Rear-axle steering	●	●
Suspension – AIRMATIC air suspension with air suspension struts at the front and rear axle, automatic level control system, dependent on load: load detection for a constant suspension level, suspension level can be raised for rough roads and is automatically lowered at high speeds	●	●

## Exterior

Acoustic ambient protection	●	●
AMG bodystyling	●	●
AMG front apron with A-wing and voluminous air intakes	●	●
AMG illuminated door sills with 'AMG' lettering and with exchangeable cover	●	●
AMG Night package	–	●
AMG-specific radiator grille with vertical struts in high-gloss chrome	●	–
AMG-specific radiator grille, darkened	–	●
Central Mercedes star without a standing counterpart on the bonnet	●	●
Charging cable for domestic socket, 5 m, straight	●	●
Charging cable for wallbox and public charging stations, 8 m, straight	●	●
Charging socket	●	●
Charging system – alternating current charging system – 3.7kW AC	●	●

Performance Night Edition  
Performance Touring

Brake callipers – grey painted	●	–
Brake callipers – red painted	–	●
Electrically adjustable, heated and automatic dimming (exterior driver's side) mirrors with kerb/parking function	●	●
Exterior mirrors – ambient lighting with projection of brand logo	●	●
Headlamps – DIGITAL LIGHT	●	●
Heat-insulating, dark-tinted, noise-insulating and infrared-reflecting laminated glass	●	●
Heated windscreen	●	●
KEYLESS-GO starting function	●	●
KEYLESS-GO with HANDS-FREE ACCESS and seamless door handles	●	●
Large compound brake discs, 360×26 mm, internally ventilated and perforated at the rear	●	●
Large compound brake discs, 390×36 mm, internally ventilated and perforated at the front	●	●
MAGIC VISION CONTROL – adaptive windscreen wiper system, heated	●	●
Panoramic sliding sunroof	●	●
Power closing doors and boot lid – the assisted closing function closes doors smoothly and almost silently	●	●
Remote boot lid closing – open and close the boot lid from the driver's seat, while standing at the boot, or by using the vehicle key	●	●

Performance Night Edition  
Performance Touring

## Wheels

21" AMG forged wheels – cross-spoke design, painted matt black with a high-sheen rim flange, 255/40 (front) and 285/35 (rear) R21 tyres (code RWD)	–	●
21" AMG forged wheels – polished multi-spoke design, 255/40 (front) and 285/35 (rear) R21 tyres (code RWM)	●	–
Locking wheel nuts	●	●
Summer tyres	●	●

[Book a test drive](#)[Find your S-Class](#)[Find a Showroom](#)

# Standard equipment Mercedes-AMG

● Standard    – Not available

## Interior

	Performance Night Edition	Performance Touring
12 V socket in rear of centre console plus in the front passenger footwell	●	●
12 V socket in boot	●	●
Adaptive rear compartment lighting	●	●
Active ambient lighting with 10 colour schemes	●	●
AIR-BALANCE package	●	●
AMG floor mats	●	●
AMG pedals in brushed stainless steel with rubber studs	●	●
Automatically dimming rear view mirror	●	●
Centre console in a black crystal-look finish	●	●
Double sun visors	–	●
EASY ADJUST luxury head restraints with additional cushion for driver and front passenger, foldable and removable on front passenger side	●	●
EASY-ENTRY system to make it easier for the driver to get in and out	●	●
Electrically adjustable rear seats including memory function	●	●
Electric sunblinds in rear doors, left and right	●	●
Electric sunblind for rear window	●	●
ENERGIZING AIR CONTROL	●	●
Heated armrest in rear and in centre console	●	●
Memory package with electrically adjustable driver and front passenger seats, steering column and exterior mirrors, with three storable positions	●	●
Seats – Active Multicontour Seat package	●	●
Seats – climatized front and rear seats	●	●

	Performance Night Edition	Performance Touring
Steering wheel – AMG Performance steering wheel in nappa leather	●	–
Steering wheel – AMG Performance steering wheel in nappa leather/MICROCUT microfibre	–	●
Steering wheel – AMG steering wheel buttons	●	●
Steering wheel – heated	●	●
Steering wheel gearshift paddles	●	●
THERMOTRONIC 4-zone automatic climate control	●	●
Through-loading feature	●	●
Two bag hooks	●	●
Warmth Comfort package	●	●

## Paint, Trim and Upholstery

Exclusive package	●	●
Paint – metallic	●	●
Roof liner – DINAMICA roof liner in black	●	●
Trim – AMG carbon-fibre/black piano lacquer trim elements	–	●
Trim – Anthracite open-pore poplar wood trim	●	–
Upholstery – AMG Exclusive nappa leather black	●	●

<sup>1</sup>On Mercedes-Maybach S 680 4MATIC First Class only in conjunction with MAYBACH Exclusive nappa leather MANUFAKTUR package (code DPL)

[Book a test drive](#)[Find your S-Class](#)[Find a Showroom](#)

# Standard equipment Mercedes-AMG

● Standard    – Not available

## Safety and Assistance Systems

	Performance Night Edition	Performance Touring
Anti-lock braking system (ABS) with Brake Assist (BAS)	●	●
Adaptive brake lights	●	●
Airbags – beltbags in rear	●	●
Airbags – centre airbag	●	●
Airbags – driver and front passenger	●	●
Airbags – forward facing rear	●	●
Airbags – front sidebags	●	●
Airbags – rear side airbags	●	●
Airbags – windowbags	●	●
ATTENTION ASSIST	●	●
Automatic child seat recognition sensor	●	●
Belt feeders in the rear	●	●
Brake pad wear indicator – front brakes	●	●
Crosswind Assist	●	●
Dashcam	●	●
Designer belt buckles front and rear	●	●
Driving Assistance package <sup>1</sup>	●	●
Electric parking brake	●	●
Electric Stability Program (ESP®) with Acceleration Skid Control (ASR)	●	●
First aid kit	●	●
GUARD 360° vehicle protection Plus <sup>2</sup>	●	●

Increased anti-theft protection	●	●
Intelligent parking pilot	●	●
Parking package with 360 camera and remote parking function	●	●
Pedestrian protection	●	●
PRE-SAFE® system including PRE-SAFE sound	●	●
Rear belt status indication in the instrument display	●	●
TIREFIT with tyre inflation compressor	●	●
Tyre pressure loss warning system	●	●

## Communications and In-Car Entertainment

3D driver display – 12.3-inch freestanding display	●	●
5G communications module <sup>2</sup>	●	●
Accident recovery and breakdown management <sup>2,3</sup> – in an emergency quickly provides a connection to the Customer Assistance Centre in order to obtain assistance, for example with recovery of the vehicle or from the breakdown service Mercedes-Benz Service 24 h	●	●
DAB digital radio	●	●
Fingerprint scanner – colour-illuminated fingerprint scanner in the trim strip below the OLED media display, two fingerprints per user can be stored, quick access replaces PIN entry, protects personal data such as profiles plus office and payment functions	●	●
Geofencing <sup>2</sup> – available to use free of charge for three years following activation <sup>3</sup> , denotes a specific area and notifies via push message when the vehicle leaves or enters this area	●	●
Hard-disc navigation	●	●

<sup>1</sup>Our driver assistance and safety systems are aids and do not relieve you of your responsibility as the driver. Please take note of the information in the Owner's Manual and the system limits which are described therein

<sup>2</sup>The connection of the communication module to the mobile phone network including the emergency call system depends on the respective network coverage and availability of network providers <sup>3</sup>To use this service, you must register on the Mercedes me portal and also accept the Terms of Use for the Mercedes me connect services. In addition, the respective vehicle must be paired with the user account. Upon expiry of the initial term, the services can be extended for a fee. Initial activation of the services is possible within 1 year of first registration or commissioning by the customer, whichever occurs first



[Book a test drive](#)[Find your S-Class](#)[Find a Showroom](#)

# Standard equipment Mercedes-AMG

● Standard – Not available

## Communications and In-Car Entertainment (continued)

Maintenance management<sup>1</sup> – proactively transfers maintenance details to the preferred Mercedes-Benz service partner in order to coordinate workshop appointments

MBUX augmented reality for navigation

MBUX augmented reality head-up display

MBUX extended functions<sup>2</sup>

MBUX Interior Assist (front and rear)<sup>1</sup>

MBUX navigation premium

MBUX rear tablet

Mercedes-Benz emergency call system<sup>2</sup>

OLED central display – 12.8-inch touchscreen

Parked vehicle locator<sup>2</sup> – available to use free of charge for three years following activation<sup>1</sup>, shows the position of the parked vehicle in a radius of approx. 1.5 km

Pre-installation for Car Sharing<sup>2</sup>

Pre-installation for Navigation Services<sup>2</sup> – display of online content on the navigation map, parking spaces, weather information, local search

Remote and Charging Services Plus<sup>2</sup> – available to use free of charge for three years following activation<sup>1</sup>

Remote Door Locking and Unlocking<sup>2</sup> – available to use free of charge for three years following activation<sup>1</sup>, provides convenient remote monitoring

Remote parking package<sup>2</sup> – available to use free of charge for 3 years following activation<sup>1</sup>

Remote retrieval of vehicle status<sup>1,2</sup> – shows mileage, tyre pressure, washer fluid level, etc.

Remote vehicle diagnostics<sup>1,2</sup> – enables better support in the workshop by allowing the Mercedes-Benz service partner to query the vehicle status prior to an upcoming workshop appointment

Performance Night Edition  
Performance Touring

● ●

● ●

● ●

● ●

● ●

● ●

● ●

● ●

● ●

● ●

● ●

● ●

● ●

● ●

● ●

● ●

● ●

● ●

● ●

● ●

Remote vehicle finder<sup>2</sup> – available to use free of charge for three years following activation<sup>1</sup> indicators activated via the app help to draw attention to the vehicle, for example in large, confusing car parks

Send2Car function<sup>2</sup> – available to use free of charge for three years following activation<sup>1</sup>, sends selected addresses via the app to the vehicle's navigation system, for example POIs or restaurants

Software update<sup>1,2</sup> – updates the software of the vehicle's systems without having to visit the workshop

Sound personalisation – a setup assistant with innovative algorithms identifies your music preferences together with you and sets the Burmester® sound system to match your requirements. It stores the result in a personal profile

Sound system – Burmester® high-end 3D surround sound system

Speed fencing<sup>2</sup> – available to use free of charge for 3 years following activation<sup>1</sup>, also lists when and where the pre-defined speed was exceeded

Stolen Vehicle Help<sup>2</sup> (free of charge for 3 years from activation) – this service reduces the bureaucratic effort required and gives you an advantage in terms of time. In the event of theft, you can report it to the police. You can transfer the police file number (depending on country) plus the relevant vehicle and owner information quite simply via app to our certified partner's security centre. This centre will then coordinate with the local police station to track your vehicle

Telediagnosics<sup>1,2</sup> – notifies the Customer Assistance Centre or the preferred Mercedes-Benz service partner when components with diagnostics capability need replacing (e.g. brake pads) and enables contact to be made via a pop-up message in the vehicle's multimedia system

Two USB-C ports at the front and rear

USB Plus package – four additional USB-C connections, two at the front and in the rear

Valet protect<sup>2</sup> – available to use free of charge for 3 years following activation<sup>1</sup> notifies via the app when the ignition is switched on/off and when the vehicle moves outside a defined radius (1 km, 2.5 km or 5 km)

Wireless smartphone integration<sup>3</sup>

Wireless charging system for mobile devices in the front and rear<sup>3</sup>

● ●

● ●

● ●

● ●

● ●

● ●

● ●

● ●

● ●

● ●

● ●

● ●

● ●

● ●

● ●

● ●

● ●

● ●

● ●

● ●

● ●

<sup>1</sup>To use this service, you must register on the Mercedes me portal and also accept the Terms of Use for the Mercedes me connect services. In addition, the respective vehicle must be paired with the user account. Upon expiry of the initial term, the services can be extended for a fee. Initial activation of the services is possible within 1 year of first registration or commissioning by the customer, whichever occurs first <sup>2</sup>The connection of the communication module to the mobile phone network including the emergency call system depends on the respective network coverage and availability of network providers <sup>3</sup>Compatible smartphone required. For further details please visit <https://www.mercedes-benz-mobile.com/>

# Genuine accessories

We've developed a range of accessories you can add to help personalise and enhance your S-Class.



### Coolbox

Be it cool drinks, a picnic or baby food: the thermoelectric refrigerator box cools upon request and is the perfect companion on any day out. The thermoelectric refrigerator box cools to up to 5°C, but a max. of 20°C under the outside temperature. This portable coolbox has a textile coating, fitted pockets and a capacity of 13 litres. The coolbox is powered via a 12-volt socket. (A0008205409)



### Velour floor mats EXCLUSIV, driver's/co-driver's mat, 2-piece

Exclusive velour mats with exceptionally deep, thick pile, featuring metal badge with Mercedes-Benz lettering. Available in various colours to match your interior. Mercedes-Benz floor mats have to undergo rigorous testing before they are deemed worthy of the star logo. The mats are precision-tailored to your Mercedes-Benz. They can be clip-fastened to the floor of the vehicle to prevent slipping. (A22368065039K26)



### Reversible mat

This anti-slip mat by Mercedes-Benz protects the boot floor during loading and unloading. Made from 100% polyester. Double-sided: with rubberised, non-slip side and high-quality velour side. Prevents cargo from sliding around. Protects the load compartment floor from dirt and damp. Easy to clean with warm water. (A2236807604)



### Velour floor mats EXCLUSIV, rear, 2-piece

Exclusive velour mats with an exceptionally deep, thick pile. Available in various colours to match your interior. Mercedes-Benz floor mats have to undergo rigorous testing before they are deemed worthy of the star logo. The mats are precision-tailored to your Mercedes-Benz using the vehicle's original CAD data. They can be clip-fastened to the floor of the vehicle to prevent slipping. (A22368082039K26)

All the above accessories are subject to availability and compatibility. Please ask your Mercedes-Benz Authorised Repairer for more information

Images shown are for illustration purposes only

Design	Technology	Plug-in Hybrid	Safety	Model lines	Model prices	Mercedes-AMG	Mercedes-AMG prices	Personalisation	Standard equipment	Genuine accessories	Technical data	Additional information
--------	------------	----------------	--------	-------------	--------------	--------------	---------------------	-----------------	--------------------	---------------------	----------------	------------------------

[Book a test drive](#)[Find your S-Class](#)[Find a Showroom](#)

# Technical data S-Class

- Standard

Model	S 500 4MATIC [L]	S 580 e L	S 350 d [L]	S 450 d 4MATIC L
<b>Engine</b>				
Fuel delivery	Petrol	Petrol	Diesel	Diesel
Total displacement	cc 2,999	2,999	2,989	2,989
Arrangement/cylinders/valves	in-line/6/24	in-line/6/24	in-line/6/24	in-line/6/24
Power <sup>1</sup>	hp (kW) at rpm			
Combustion engine	449 (330)/5,800–6,100	367 (270)/5,500–6,100	313 (230)/3,600–4,800	367 (270)/4,000
Electric motor	–	150 (110)	–	–
Torque <sup>1</sup>	Nm at rpm			
Combustion engine	560/2,200–5,000	500/1,600–4,500	650/1,200–3,200	750/1,350–2,800
Electric motor	–	440/2,400	–	–
Compression ratio	10:01	10.0:1	15.5:1	15.5:1
Equivalent All-Electric Range (EAER) <sup>2</sup>	mi –	67–68	–	–
Battery type (capacity)	kWh –	Lithium-ion (21.5)	–	–
Electric energy consumption, combined <sup>2,3</sup>	kWh/km –	233–236	–	–
Charging time				
Public charging station (60 kW DC) 10–80% <sup>4</sup>	–	20 mins	–	–
Wallbox (11 kW AC) 0–100% <sup>5</sup>	–	2 hrs 15 mins	–	–
Domestic socket (1.8 kW)	–	15 hrs	–	–
Capacity on-board charger	kW –	11 AC; 60 DC	–	–
Emissions standard	EURO 6D-ISC-FCM	EURO 6D-ISC-FCM	EURO 6D-ISC-FCM	EURO 6D-ISC-FCM
<b>Transmission</b>				
9G-TRONIC 9-speed automatic	●	●	●	●

<sup>1</sup>Figures according to Directive 80/1269/EEC in the currently applicable version   <sup>2</sup>The indicated values were determined according to the prescribed measurement method - Worldwide Harmonised Light Vehicle Test Procedure (WLTP). Figures shown may include options which are not available in the UK. For Plug-in Hybrid Electric Vehicle (PHEV) figures determined with the battery fully charged, using a combination of both battery power and fuel. These models require mains electricity for charging   <sup>3</sup>The certified electrical consumption is generally determined at maximum AC charging capacity using a Mode 3 cable. It is therefore recommended that vehicles with a HV battery preferably be charged at a wallbox or an AC charging station with a Mode 3 cable in order to achieve shorter charging times and improved charging efficiency   <sup>4</sup>Specified voltage and current values refer to network infrastructure and can be limited by the vehicle. Times are from 10-80% charge using public rapid charging at 60 kW   <sup>5</sup>Specified voltage and current values refer to network infrastructure and can be limited by the vehicle. Times are from 0-100% charge using a wallbox (three-phase) or standard socket (single-phase)



[Book a test drive](#)[Find your S-Class](#)[Find a Showroom](#)

# Technical data S-Class

Model		S 500 4MATIC [L]	S 580 e L	S 350 d [L]	S 450 d 4MATIC L
<b>Performance</b>					
Acceleration 0–62 mph	sec	4.7	5.2	5.6	5.0
Top speed	mph	155	155	155	155

<b>Weights and capacities</b>					
Kerb weight <sup>6</sup>	kg	2,256 [2,313–2,364]	2,634–2,685	2,273 [2,332–2,383]	2,361–2,412
Perm. Gross Vehicle Weight	kg	2,810 [2,820]	3,070	2,730 [2,765]	2,820
Boot capacity	l	550	350	540	540
Towing capacity – unbraked/braked	kg	750/2,100	–/–	750/2,100	750/2,100
Fuel tank capacity/of which reserve	l	76/8	67/8	76/8	76/8
Turning circle	m	12.5 [12.8]	12.5	12.2 [12.5]	12.8

<b>Fuel consumption<sup>7,8,9</sup></b>					
Combined (consumption dependent on chosen optional equipment)	l/100 km	8.6 [9.0–8.7]	8.1–8.0 (electric: 0.7)	6.2 [6.6–6.3]	6.8–6.5
	mpg	32.8 [31.4–32.5]	34.9–35.3 (electric: 403.6)	45.6 [42.8–44.8]	41.5–43.5

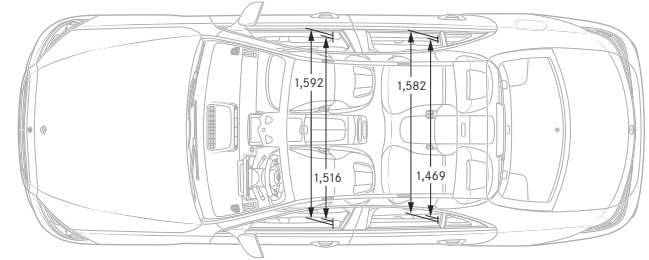
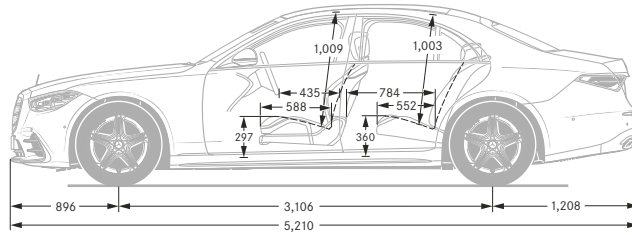
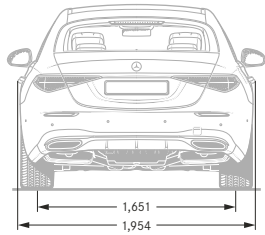
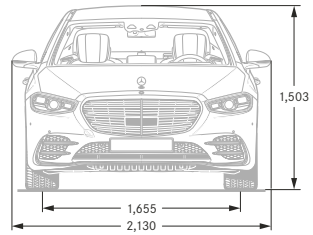
<b>Insurance</b>					
Group rating		50E [50E]	50E	50E [50E]	50E

Insurance ratings may vary depending on model line and specification. Please refer to <http://www.thatcham.org/abigrouprating/> for further details

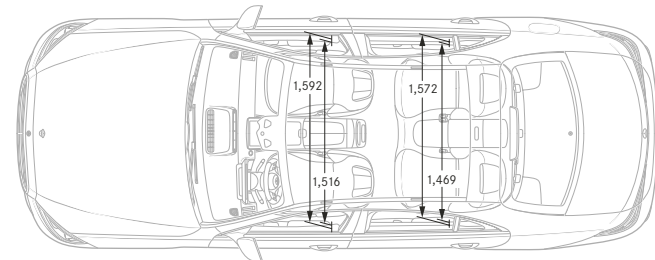
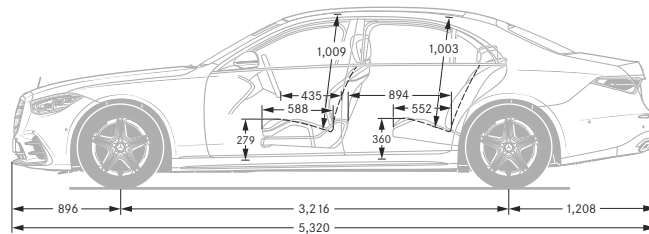
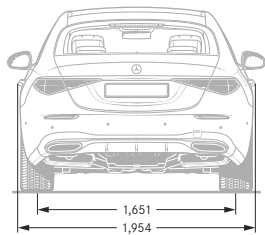
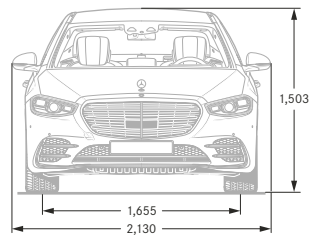
<sup>6</sup>Mass of the vehicle in running order with at least 90% full fuel tank, plus the mass of the driver (estimated by law at 75 kg), fuel and fluids, equipped with the standard equipment as specified by the manufacturer as well as, where applicable, the mass of the body, cab, trailer coupling and spare wheel(s) as well as tools. Optional extras, additional equipment and accessories can influence the weight, residual payload, rolling resistance, aerodynamics, etc., and therefore also affect the consumption/CO<sub>2</sub> values <sup>7</sup>All figures are based on a standard specification with the smallest tyre size <sup>8</sup>The choice of wheels and transmission may affect CO<sub>2</sub> emissions and corresponding Road Fund Licence <sup>9</sup>The indicated values were determined according to the prescribed measurement method - Worldwide Harmonised Light Vehicle Test Procedure (WLTP). Figures shown may include options which are not available in the UK

[Book a test drive](#)[Find your S-Class](#)[Find a Showroom](#)

## AMG Line Premium (short wheelbase)



## AMG Line Premium (long wheelbase)



All measurements in millimetres. The dimensions shown are mean values and apply to standard-specification, unladen vehicles

Design	Technology	Plug-in Hybrid	Safety	Model lines	Model prices	Mercedes-AMG	Mercedes-AMG prices	Personalisation	Standard equipment	Genuine accessories	Technical data	Additional information
--------	------------	----------------	--------	-------------	--------------	--------------	---------------------	-----------------	--------------------	---------------------	----------------	------------------------

[Book a test drive](#)[Find your S-Class](#)[Find a Showroom](#)

# Technical data Mercedes-AMG

- Standard

Model		Mercedes-AMG S 63 E Performance Touring	Mercedes-AMG S 63 E Performance Night Edition
<b>Engine</b>			
Fuel delivery		Petrol	Petrol
Total displacement	cc	3,982	3,982
Arrangement/cylinders/valves		V/8/32	V/8/32
Power <sup>1</sup>	hp (kW) at rpm		
Combustion engine		612 (450)/5,500–6,500	612 (450)/5,500–6,500
Electric motor		190 (140)	190 (140)
Torque <sup>1</sup>	Nm at rpm		
Combustion engine		900/2,500–4,500	900/2,500–4,500
Electric motor		320	320
Compression ratio		8:6:1	8:6:1
Equivalent All-Electric Range (EAER) <sup>2</sup>	mi	19	19
Battery type (usable)	kWh	lithium-ion (13.1 kWh)	lithium-ion (13.1 kWh)
Range power consumption, combined <sup>2,3</sup>	kWh/100 km	355	355
Charging time			
Wallbox (3.7 kW AC) 25–100% <sup>4</sup>		3 hrs 15 mins	3 hrs 15 mins
Domestic socket (1.8 kW)		7 hrs	7 hrs
Capacity on-board charger	kW	3.7 AC	3.7 AC
Emissions standard		EURO 6D-ISC-FCM	EURO 6D-ISC-FCM
<b>Transmission</b>			
AMG SPEEDSHIFT MCT 9G		●	●

<sup>1</sup>Figures according to Directive 80/1269/EEC in the currently applicable version    <sup>2</sup>The indicated values were determined according to the prescribed measurement method - Worldwide Harmonised Light Vehicle Test Procedure (WLTP). Figures shown may include options which are not available in the UK. For Plug-in Hybrid Electric Vehicle (PHEV) figures determined with the battery fully charged, using a combination of both battery power and fuel. These models require mains electricity for charging    <sup>3</sup>The certified electrical consumption is generally determined at maximum AC charging capacity using a Mode 3 cable. It is therefore recommended that vehicles with a HV battery preferably be charged at a wallbox or an AC charging station with a Mode 3 cable in order to achieve shorter charging times and improved charging efficiency    <sup>4</sup>Specified voltage and current values refer to network infrastructure and can be limited by the vehicle. Times are from 25-100% charge using a wallbox (three-phase) or standard socket (single-phase)



[Book a test drive](#)[Find your S-Class](#)[Find a Showroom](#)

# Technical data Mercedes-AMG

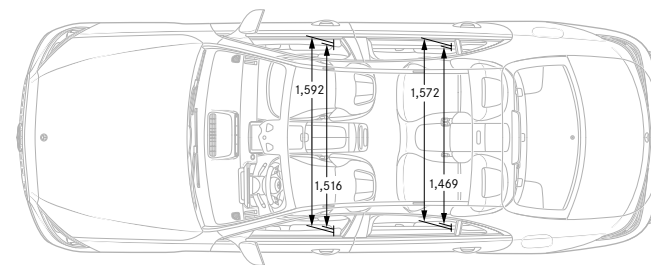
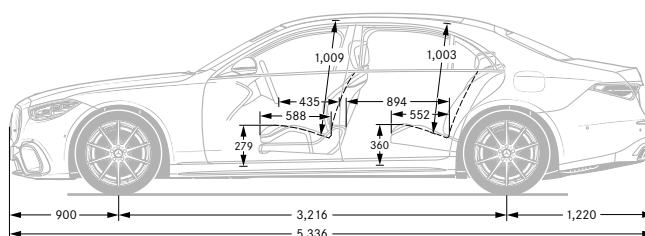
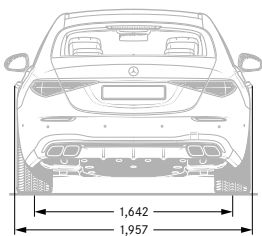
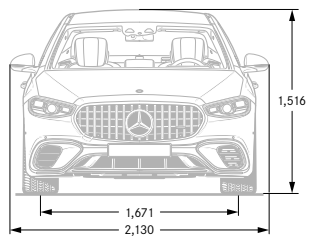
Model	Mercedes-AMG S 63 E Performance Touring		Mercedes-AMG S 63 E Performance Night Edition	
<b>Performance</b>				
Acceleration 0–62 mph	sec	3.3		3.3
Top speed (electronically limited)	mph	180		180
<b>Weights and capacities</b>				
Kerb weight <sup>5</sup>	kg	2,920		2,920
Perm. Gross Vehicle Weight	kg	3,145		3,145
Boot capacity	l	305		305
Fuel tank capacity/of which reserve	l	76/12		76/12
Turning circle	m	12.4		12.4
<b>Fuel consumption<sup>6,7,8</sup></b>				
Combined (consumption dependent on chosen optional equipment)	l/100 km	4.6		4.6
	mpg	61.4		61.4
<b>Insurance</b>				
Group rating		50E		50E

Insurance ratings may vary depending on model line and specification. Please refer to <http://www.thatcham.org/abigrouprating/> for further details

<sup>5</sup>Mass of the vehicle in running order with at least 90% full fuel tank, plus the mass of the driver (estimated by law at 75 kg), fuel and fluids, equipped with the standard equipment as specified by the manufacturer as well as, where applicable, the mass of the body, cab, trailer coupling and spare wheel(s) as well as tools. Optional extras, additional equipment and accessories can influence the weight, residual payload, rolling resistance, aerodynamics, etc., and therefore also affect the consumption/CO<sub>2</sub> values <sup>6</sup>All figures are based on a standard specification with the smallest tyre size <sup>7</sup>The choice of wheels and transmission may affect CO<sub>2</sub> emissions and corresponding Road Fund Licence <sup>8</sup>The indicated values were determined according to the prescribed measurement method - Worldwide Harmonised Light Vehicle Test Procedure (WLTP). Figures shown may include options which are not available in the UK

[Book a test drive](#)[Find your S-Class](#)[Find a Showroom](#)

## Mercedes-AMG S 63 E Performance



All measurements in millimetres. The dimensions shown are mean values and apply to standard-specification, unladen vehicles

Design	Technology	Plug-in Hybrid	Safety	Model lines	Model prices	Mercedes-AMG	Mercedes-AMG prices	Personalisation	Standard equipment	Genuine accessories	Technical data	Additional information
--------	------------	----------------	--------	-------------	--------------	--------------	---------------------	-----------------	--------------------	---------------------	----------------	------------------------



# Road Fund Licence

All road vehicle registrations are subject to Vehicle Excise Duty (Road Fund Licence), which varies in accordance with the vehicle's CO<sub>2</sub> emissions. A first year rate for each taxation band will apply. The table below shows the bands (A-M) created by the DVLA and the corresponding Road Fund Licence. CO<sub>2</sub> emissions and the relevant Excise Duty are shown on the model pricing pages.

Band	CO <sub>2</sub> emissions (g/km)	First year rate petrol and RDE2 diesel (£)	First year rate alternative fuel (£)	Electric vehicles		Alternative fuel vehicles		Petrol/diesel vehicles	
				Standard rate (£)	Premium rate (£) <sup>1</sup>	Standard rate (£)	Premium rate (£) <sup>1</sup>	Standard rate (£)	Premium rate (£) <sup>1</sup>
A	0	0.00	0.00	0.00	0.00	0.00	0.00	0.00	0.00
B	1 to 50	10.00	0.00	0.00	0.00	170.00	560.00	180.00	570.00
C	51 to 75	30.00	20.00	0.00	0.00	170.00	560.00	180.00	570.00
D	76 to 90	130.00	120.00	0.00	0.00	170.00	560.00	180.00	570.00
E	91 to 100	165.00	155.00	0.00	0.00	170.00	560.00	180.00	570.00
F	101 to 110	185.00	175.00	0.00	0.00	170.00	560.00	180.00	570.00
G	111 to 130	210.00	200.00	0.00	0.00	170.00	560.00	180.00	570.00
H	131 to 150	255.00	245.00	0.00	0.00	170.00	560.00	180.00	570.00
I	151 to 170	645.00	635.00	0.00	0.00	170.00	560.00	180.00	570.00
J	171 to 190	1,040.00	1,030.00	0.00	0.00	170.00	560.00	180.00	570.00
K	191 to 225	1,565.00	1,555.00	0.00	0.00	170.00	560.00	180.00	570.00
L	226 to 255	2,220.00	2,210.00	0.00	0.00	170.00	560.00	180.00	570.00
M	over 255	2,605.00	2,595.00	0.00	0.00	170.00	560.00	180.00	570.00



Some of the model features, optional extras and colours shown may not be available, or may only be available in a different specification, or at a different price  
<sup>1</sup>Premium rate only applicable to vehicles where the list price is over £40,000 including any factory-fitted options, standard UK delivery charge and VAT





# Services and insurance

## Mercedes-Benz ServiceCare

We believe that servicing costs should be as flexible and affordable as possible for your S-Class, which is why we offer ServiceCare, an easy way to budget for all your servicing costs. It spreads your bills into manageable payments based on whether you have a new or used Mercedes-Benz. With ServiceCare we guarantee the price of parts and labour for up to four services and safeguard against any further inflation. It also covers the cost of all recommended service items including brake fluid, spark plugs, air filters, fuel filters and screen wash. You can choose either to add your servicing costs into your monthly spend or pay the full amount in a one-off payment, giving you peace of mind that they are taken care of for the period of the plan.

[› Click here for more information](#)

## Warranty and breakdown cover

Every Mercedes-Benz comes with a three-year unlimited mileage warranty against manufacturing or material defects<sup>1</sup> and up to 30 years warranty against perforation due to corrosion from the inside out.<sup>2</sup> What's more, it's also covered by Mercedes-Benz Roadside Assistance – a unique package comprising up to 30 years pan-European breakdown assistance.<sup>2</sup>

## Motor Insurance

We know that once you have chosen your Mercedes-Benz you can't wait to drive it – that's why we created First Cover<sup>3</sup>. It gives you 7 days' free comprehensive Motor Insurance when you buy a new or used vehicle from a Mercedes-Benz Agent. We will also send you a quote for annual cover, so you can enjoy the same peace of mind all year round.

[› Apply for First Cover](#)

<sup>1</sup>Applies to vehicles sold by Mercedes-Benz in the UK to its franchised Mercedes-Benz Agents

<sup>2</sup>Subject to full Terms and Conditions, dependent on date of registration, available upon request

<sup>3</sup>Terms and Conditions apply. We are an independent intermediary dealing with selected insurers in respect of annual insurance

<a href="#">Design</a>	<a href="#">Technology</a>	<a href="#">Plug-in Hybrid</a>	<a href="#">Safety</a>	<a href="#">Model lines</a>	<a href="#">Model prices</a>	<a href="#">Mercedes-AMG</a>	<a href="#">Mercedes-AMG prices</a>	<a href="#">Personalisation</a>	<a href="#">Standard equipment</a>	<a href="#">Genuine accessories</a>	<a href="#">Technical data</a>	<a href="#">Additional information</a>
------------------------	----------------------------	--------------------------------	------------------------	-----------------------------	------------------------------	------------------------------	-------------------------------------	---------------------------------	------------------------------------	-------------------------------------	--------------------------------	--



Effective from December 2023 Production. Information correct at time of publication 16.10.2023.

Prices and specifications are subject to change without prior notice.

MBWV223/1123 MY804.5

Mercedes-Benz UK Limited, Delaware Drive, Tongwell, Milton Keynes, MK15 8BA. Company number: 02448457 [www.mercedes-benz.co.uk](http://www.mercedes-benz.co.uk)

